

# GCSm-γ Polyclonal Antibody

Catalog # AP70067

## Product Information

---

<b>Application</b>	WB, IHC-P
<b>Primary Accession</b>	<a href="#">P48507</a>
<b>Reactivity</b>	Human, Mouse, Rat, Monkey
<b>Host</b>	Rabbit
<b>Clonality</b>	Polyclonal
<b>Calculated MW</b>	30727

## Additional Information

---

<b>Gene ID</b>	2730
<b>Other Names</b>	GCLM; GLCLR; Glutamate--cysteine ligase regulatory subunit; GCS light chain; Gamma-ECS regulatory subunit; Gamma-glutamylcysteine synthetase regulatory subunit; Glutamate--cysteine ligase modifier subunit
<b>Dilution</b>	WB~~Western Blot: 1/500 - 1/2000. Immunohistochemistry: 1/100 - 1/300. ELISA: 1/10000. Not yet tested in other applications. IHC-P~~N/A
<b>Format</b>	Liquid in PBS containing 50% glycerol, 0.5% BSA and 0.09% (W/V) sodium azide.
<b>Storage Conditions</b>	-20°C

## Protein Information

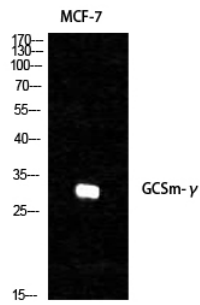
---

<b>Name</b>	GCLM
<b>Synonyms</b>	GLCLR
<b>Tissue Location</b>	In all tissues examined. Highest levels in skeletal muscle

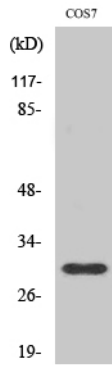
## Images

---

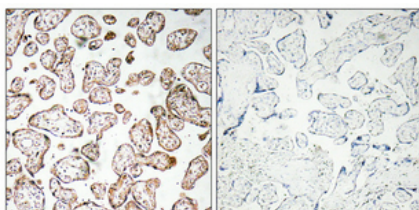
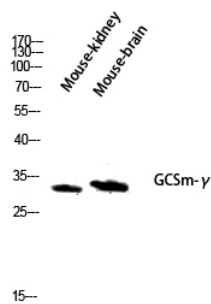
Western Blot analysis of various cells using GCSm-γ  
Polyclonal Antibody diluted at 1 : 1000



Western Blot analysis of COS7 cells using GCSm-γ Polyclonal Antibody diluted at 1 : 1000



Western blot analysis of Mouse-kidney mouse-brain lysis using GCSm-γ antibody. Antibody was diluted at 1:1000



Immunohistochemical analysis of paraffin-embedded Human placenta. Antibody was diluted at 1:100(4°,overnight). High-pressure and temperature Tris-EDTA,pH8.0 was used for antigen retrieval. Negative contrl (right) obtaned from antibody was pre-absorbed by immunogen peptide.

Please note: All products are 'FOR RESEARCH USE ONLY. NOT FOR USE IN DIAGNOSTIC OR THERAPEUTIC PROCEDURES'.