

GFAP Polyclonal Antibody

Catalog # AP70077

Product Information

Application	WB, IHC-P, IF
Primary Accession	P14136
Reactivity	Human
Host	Rabbit
Clonality	Polyclonal
Calculated MW	49880

Additional Information

Gene ID	2670
Other Names	GFAP; Glial fibrillary acidic protein; GFAP
Dilution	WB~~Western Blot: 1/500 - 1/2000. Immunohistochemistry: 1/100 - 1/300. Immunofluorescence: 1/200 - 1/1000. ELISA: 1/5000. Not yet tested in other applications. IHC-P~~N/A IF~~1:50~200
Format	Liquid in PBS containing 50% glycerol, 0.5% BSA and 0.09% (W/V) sodium azide.
Storage Conditions	-20°C

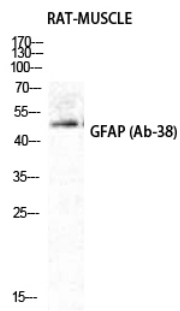
Protein Information

Name	GFAP
Function	GFAP, a class-III intermediate filament, is a cell-specific marker that, during the development of the central nervous system, distinguishes astrocytes from other glial cells.
Cellular Location	Cytoplasm. Note=Associated with intermediate filaments
Tissue Location	Expressed in cells lacking fibronectin.

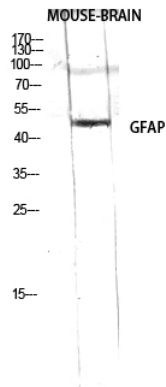
Background

GFAP, a class-III intermediate filament, is a cell- specific marker that, during the development of the central nervous system, distinguishes astrocytes from other glial cells.

Images



Western Blot analysis of RAT-MUSCLE cells using GFAP Polyclonal Antibody diluted at 1 : 2000



Western Blot analysis of RAW using GFAP Polyclonal Antibody diluted at 1 : 2000

Please note: All products are 'FOR RESEARCH USE ONLY. NOT FOR USE IN DIAGNOSTIC OR THERAPEUTIC PROCEDURES'.