

Ghrelin Polyclonal Antibody

Catalog # AP70083

Product Information

Application	WB, IHC-P
Primary Accession	Q9UBU3
Reactivity	Human, Mouse, Rat
Host	Rabbit
Clonality	Polyclonal
Calculated MW	12911

Additional Information

Gene ID	51738
Other Names	GHRL; MTLRP; Appetite-regulating hormone; Growth hormone secretagogue; Growth hormone-releasing peptide; Motilin-related peptide; Protein M46
Dilution	WB~~Western Blot: 1/500 - 1/2000. Immunohistochemistry: 1/100 - 1/300. ELISA: 1/10000. Not yet tested in other applications. IHC-P~~N/A
Format	Liquid in PBS containing 50% glycerol, 0.5% BSA and 0.09% (W/V) sodium azide.
Storage Conditions	-20°C

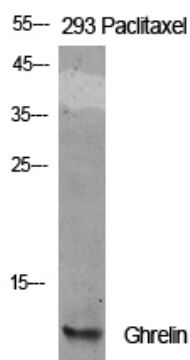
Protein Information

Name	GHRL
Synonyms	MTLRP
Function	[Ghrelin-27]: Ghrelin is the ligand for growth hormone secretagogue receptor type 1 (GHSR) (PubMed: 10604470). Induces the release of growth hormone from the pituitary (PubMed: 10604470). Has an appetite-stimulating effect, induces adiposity and stimulates gastric acid secretion. Involved in growth regulation.
Cellular Location	Secreted.
Tissue Location	Highest level in stomach. All forms are found in serum as well. Other tissues compensate for the loss of ghrelin synthesis in the stomach following gastrectomy

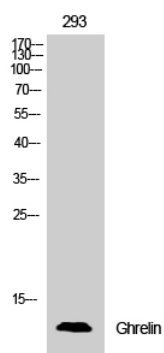
Background

Ghrelin is the ligand for growth hormone secretagogue receptor type 1 (GHSR). Induces the release of growth hormone from the pituitary. Has an appetite-stimulating effect, induces adiposity and stimulates gastric acid secretion. Involved in growth regulation.

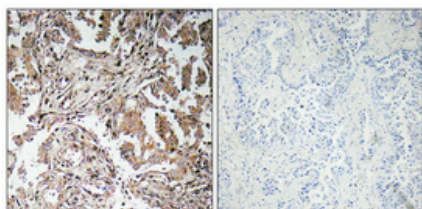
Images



Western Blot analysis of various cells using Ghrelin Polyclonal Antibody



Western Blot analysis of 293 cells using Ghrelin Polyclonal Antibody



Immunohistochemical analysis of paraffin-embedded Human lung cancer. Antibody was diluted at 1:100(4°,overnight). High-pressure and temperature Tris-EDTA,pH8.0 was used for antigen retrieval. Negative contrl (right) obtaned from antibody was pre-absorbed by immunogen peptide.

Please note: All products are 'FOR RESEARCH USE ONLY. NOT FOR USE IN DIAGNOSTIC OR THERAPEUTIC PROCEDURES'.