

GHRH-R Polyclonal Antibody

Catalog # AP70084

Product Information

Application	WB, IF, ICC, E
Primary Accession	Q02643
Reactivity	Human, Mouse, Rat
Host	Rabbit
Clonality	Polyclonal
Calculated MW	47402

Additional Information

Gene ID	2692
Other Names	GHRHR; Growth hormone-releasing hormone receptor; GHRH receptor; Growth hormone-releasing factor receptor; GRF receptor; GRFR
Dilution	WB~~Western Blot: 1/500 - 1/2000. Immunofluorescence: 1/200 - 1/1000. ELISA: 1/20000. Not yet tested in other applications. IF~~1:50~200 ICC~~N/A E~~N/A
Format	Liquid in PBS containing 50% glycerol, 0.5% BSA and 0.09% (W/V) sodium azide.
Storage Conditions	-20°C

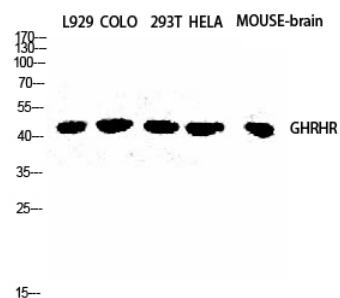
Protein Information

Name	GHRHR
Function	Receptor for GRF, coupled to G proteins which activate adenylyl cyclase. Stimulates somatotroph cell growth, growth hormone gene transcription and growth hormone secretion.
Cellular Location	Cell membrane; Multi-pass membrane protein.
Tissue Location	Pituitary gland.

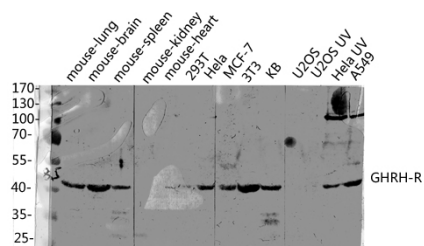
Background

Receptor for GRF, coupled to G proteins which activate adenylyl cyclase. Stimulates somatotroph cell growth, growth hormone gene transcription and growth hormone secretion.

Images



Western Blot analysis of L929 COLO 293T HELA
MOUSE-brain cells using GHRH-R Polyclonal Antibody
diluted at 1 : 2000



Western blot analysis of various lysis using GHRH-R
Polyclonal Antibody diluted at 1 : 2000. Secondary
antibody was diluted at 1:20000

Please note: All products are 'FOR RESEARCH USE ONLY. NOT FOR USE IN DIAGNOSTIC OR THERAPEUTIC PROCEDURES'.