

# GIPR Polyclonal Antibody

Catalog # AP70089

## Product Information

---

<b>Application</b>	WB, IHC-P, IF
<b>Primary Accession</b>	<a href="#">P48546</a>
<b>Reactivity</b>	Human
<b>Host</b>	Rabbit
<b>Clonality</b>	Polyclonal
<b>Calculated MW</b>	53157

## Additional Information

---

<b>Gene ID</b>	2696
<b>Other Names</b>	GIPR; Gastric inhibitory polypeptide receptor; GIP-R; Glucose-dependent insulintropic polypeptide receptor
<b>Dilution</b>	WB~~Western Blot: 1/500 - 1/2000. Immunohistochemistry: 1/100 - 1/300. Immunofluorescence: 1/200 - 1/1000. ELISA: 1/20000. Not yet tested in other applications. IHC-P~~N/A IF~~1:50~200
<b>Format</b>	Liquid in PBS containing 50% glycerol, 0.5% BSA and 0.09% (W/V) sodium azide.
<b>Storage Conditions</b>	-20°C

## Protein Information

---

<b>Name</b>	GIPR
<b>Function</b>	This is a receptor for GIP. The activity of this receptor is mediated by G proteins which activate adenylyl cyclase.
<b>Cellular Location</b>	Cell membrane; Multi-pass membrane protein

## Background

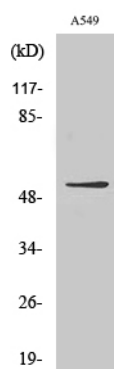
---

This is a receptor for GIP. The activity of this receptor is mediated by G proteins which activate adenylyl cyclase.

## Images

---

Western Blot analysis of various cells using GIPR



## Polyclonal Antibody

Please note: All products are 'FOR RESEARCH USE ONLY. NOT FOR USE IN DIAGNOSTIC OR THERAPEUTIC PROCEDURES'.