

GK2 Polyclonal Antibody

Catalog # AP70095

Product Information

Application	WB, IHC-P, IF
Primary Accession	Q14410
Reactivity	Human
Host	Rabbit
Clonality	Polyclonal
Calculated MW	60594

Additional Information

Gene ID	2712
Other Names	GK2; GKP2; GKTA; Glycerol kinase 2; GK 2; Glycerokinase 2; ATP:glycerol 3-phosphotransferase 2; Glycerol kinase; testis specific 2
Dilution	WB~~Western Blot: 1/500 - 1/2000. Immunohistochemistry: 1/100 - 1/300. Immunofluorescence: 1/200 - 1/1000. ELISA: 1/20000. Not yet tested in other applications. IHC-P~~N/A IF~~1:50~200
Format	Liquid in PBS containing 50% glycerol, 0.5% BSA and 0.09% (W/V) sodium azide.
Storage Conditions	-20°C

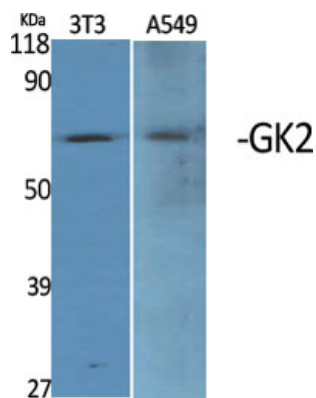
Protein Information

Name	GK2
Synonyms	GKP2, GKTA
Function	Key enzyme in the regulation of glycerol uptake and metabolism. Essential for male fertility and sperm mitochondrial sheath formation (By similarity). Required for proper arrangement of crescent- like mitochondria to form the mitochondrial sheath during spermatogenesis (By similarity). Can induce mitochondrial clustering through interactions with PLD6 and up-regulation of phosphatidic acid synthesis in the mitochondria (PubMed: 28852571).
Cellular Location	Mitochondrion outer membrane {ECO:0000250 UniProtKB:Q9WU65}; Single-pass type IV membrane protein {ECO:0000250 UniProtKB:Q9WU65}. Cytoplasm. Note=In sperm the majority of the enzyme is bound to mitochondria {ECO:0000250 UniProtKB:Q9WU65}
Tissue Location	Testis-specific (PubMed:33536340). Expressed in the midpiece of spermatozoa (PubMed:28852571)

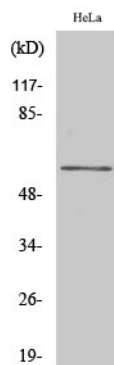
Background

Key enzyme in the regulation of glycerol uptake and metabolism.

Images



Western Blot analysis of various cells using GK2 Polyclonal Antibody



Western Blot analysis of Jurkat cells using GK2 Polyclonal Antibody

Please note: All products are 'FOR RESEARCH USE ONLY. NOT FOR USE IN DIAGNOSTIC OR THERAPEUTIC PROCEDURES'.