

# GLK Polyclonal Antibody

Catalog # AP70098

## Product Information

---

Application	WB
Primary Accession	<a href="#">Q8IVH8</a>
Reactivity	Human, Mouse, Rat
Host	Rabbit
Clonality	Polyclonal
Calculated MW	101316

## Additional Information

---

Gene ID	8491
Other Names	MAP4K3; RAB8IPL1; Mitogen-activated protein kinase kinase kinase 3; Germinal center kinase-related protein kinase; GLK; MAPK/ERK kinase kinase kinase 3; MEK kinase kinase 3; MEKKK 3
Dilution	WB~~Western Blot: 1/500 - 1/2000. ELISA: 1/20000. Not yet tested in other applications.
Format	Liquid in PBS containing 50% glycerol, 0.5% BSA and 0.09% (W/V) sodium azide.
Storage Conditions	-20°C

## Protein Information

---

Name	MAP4K3 ( <a href="#">HGNC:6865</a> )
Synonyms	RAB8IPL1
Function	Serine/threonine kinase that plays a role in the response to environmental stress. Appears to act upstream of the JUN N-terminal pathway (PubMed: <a href="#">9275185</a> ). Activator of the Hippo signaling pathway which plays a pivotal role in organ size control and tumor suppression by restricting proliferation and promoting apoptosis. MAP4Ks act in parallel to and are partially redundant with STK3/MST2 and STK4/MST2 in the phosphorylation and activation of LATS1/2, and establish MAP4Ks as components of the expanded Hippo pathway (PubMed: <a href="#">26437443</a> ).
Tissue Location	Ubiquitously expressed in all tissues examined, with high levels in heart, brain, placenta, skeletal muscle, kidney and pancreas and lower levels in lung and liver

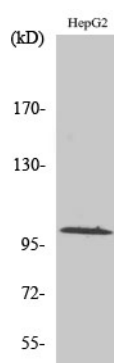
## Background

---

May play a role in the response to environmental stress. Appears to act upstream of the JUN N-terminal pathway.

## Images

---



Western Blot analysis of various cells using GLK Polyclonal Antibody

Please note: All products are 'FOR RESEARCH USE ONLY. NOT FOR USE IN DIAGNOSTIC OR THERAPEUTIC PROCEDURES'.