

Glut3 Polyclonal Antibody

Catalog # AP70112

Product Information

Application	WB, IHC-P
Primary Accession	P11169
Reactivity	Human
Host	Rabbit
Clonality	Polyclonal
Calculated MW	53924

Additional Information

Gene ID	6515
Other Names	SLC2A3; GLUT3; Solute carrier family 2; facilitated glucose transporter member 3; Glucose transporter type 3, brain; GLUT-3
Dilution	WB~~Western Blot: 1/500 - 1/2000. Immunohistochemistry: 1/100 - 1/300. ELISA: 1/10000. Not yet tested in other applications. IHC-P~~N/A
Format	Liquid in PBS containing 50% glycerol, 0.5% BSA and 0.09% (W/V) sodium azide.
Storage Conditions	-20°C

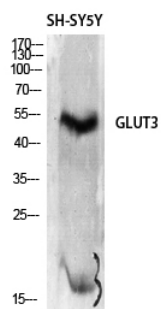
Protein Information

Name	SLC2A3 (HGNC:11007)
Function	Facilitative glucose transporter (PubMed: 26176916 , PubMed: 32860739 , PubMed: 9477959). Can also mediate the uptake of various other monosaccharides across the cell membrane (PubMed: 26176916 , PubMed: 9477959). Mediates the uptake of glucose, 2- deoxyglucose, galactose, mannose, xylose and fucose, and probably also dehydroascorbate (PubMed: 26176916 , PubMed: 9477959). Does not mediate fructose transport (PubMed: 26176916 , PubMed: 9477959). Required for mesendoderm differentiation (By similarity).
Cellular Location	Cell membrane; Multi-pass membrane protein. Perikaryon {ECO:0000250 UniProtKB:Q07647}. Cell projection {ECO:0000250 UniProtKB:Q07647}. Note=Localized to densely spaced patches along neuronal processes. {ECO:0000250 UniProtKB:Q07647}
Tissue Location	Highly expressed in brain (PubMed:8457197). Expressed in many tissues.

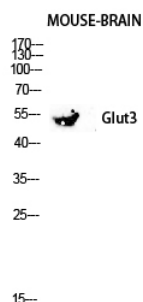
Background

Facilitative glucose transporter that can also mediate the uptake of various other monosaccharides across the cell membrane (PubMed:[9477959](#), PubMed:[26176916](#)). Mediates the uptake of glucose, 2-deoxyglucose, galactose, mannose, xylose and fucose, and probably also dehydroascorbate (PubMed:[9477959](#), PubMed:[26176916](#)). Does not mediate fructose transport (PubMed:[9477959](#), PubMed:[26176916](#)).

Images



Western Blot analysis of SH-SY5Y cells using Glut3 Polyclonal Antibody diluted at 1 : 2000



Western blot analysis of Mouse-kidney lysis using Glut3 antibody. Antibody was diluted at 1:2000

Please note: All products are 'FOR RESEARCH USE ONLY. NOT FOR USE IN DIAGNOSTIC OR THERAPEUTIC PROCEDURES'.