

# GPR107 Polyclonal Antibody

Catalog # AP70136

## Product Information

---

<b>Application</b>	WB, IHC-P, IF, ICC, E
<b>Primary Accession</b>	<a href="#">Q5VW38</a>
<b>Reactivity</b>	Human, Rat, Mouse
<b>Host</b>	Rabbit
<b>Clonality</b>	Polyclonal
<b>Calculated MW</b>	66990

## Additional Information

---

<b>Gene ID</b>	57720
<b>Other Names</b>	GPR107; KIAA1624; LUSTR1; Protein GPR107; Lung seven transmembrane receptor 1
<b>Dilution</b>	WB~~Western Blot: 1/500 - 1/2000. Immunohistochemistry: 1/100 - 1/300. Immunofluorescence: 1/200 - 1/1000. ELISA: 1/5000. Not yet tested in other applications. IHC-P~~N/A IF~~1:50~200 ICC~~N/A E~~N/A
<b>Format</b>	Liquid in PBS containing 50% glycerol, 0.5% BSA and 0.09% (W/V) sodium azide.
<b>Storage Conditions</b>	-20°C

## Protein Information

---

<b>Name</b>	GPR107
<b>Synonyms</b>	KIAA1624, LUSTR1
<b>Function</b>	Has been proposed to act as a receptor for neuronostatin, a peptide derived from the somatostatin/SST precursor (PubMed: <a href="#">22933024</a> ). Involved in blood sugar regulation through the induction of glucagon in response to low glucose (By similarity).
<b>Cellular Location</b>	Cell membrane {ECO:0000250 UniProtKB:D3ZWZ9}; Multi-pass membrane protein. Golgi apparatus, trans-Golgi network membrane

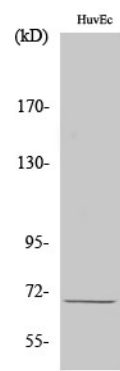
## Background

---

Involved in Golgi-to-ER retrograde transport. Functions as a host factor required for infection by *Pseudomonas aeruginosa* exotoxin A and *Campylobacter jejuni* CDT toxins.

# Images

---



Western Blot analysis of various cells using GPR107 Polyclonal Antibody

Please note: All products are 'FOR RESEARCH USE ONLY. NOT FOR USE IN DIAGNOSTIC OR THERAPEUTIC PROCEDURES'.