

GPR137C Polyclonal Antibody

Catalog # AP70154

Product Information

Application	WB, IHC-P, IF
Primary Accession	Q8N3F9
Reactivity	Human
Host	Rabbit
Clonality	Polyclonal
Calculated MW	47075

Additional Information

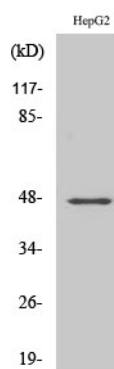
Gene ID	283554
Other Names	GPR137C; TM7SF1L2; Integral membrane protein GPR137C; Transmembrane 7 superfamily member 1-like 2 protein
Dilution	WB~~Western Blot: 1/500 - 1/2000. Immunohistochemistry: 1/100 - 1/300. Immunofluorescence: 1/200 - 1/1000. ELISA: 1/10000. Not yet tested in other applications. IHC-P~~N/A IF~~1:50~200
Format	Liquid in PBS containing 50% glycerol, 0.5% BSA and 0.09% (W/V) sodium azide.
Storage Conditions	-20°C

Protein Information

Name	GPR137C
Synonyms	TM7SF1L2
Function	Lysosomal integral membrane protein that may regulate MTORC1 complex translocation to lysosomes.
Cellular Location	Lysosome membrane; Multi-pass membrane protein

Images

Western Blot analysis of various cells using GPR137C
Polyclonal Antibody



Please note: All products are 'FOR RESEARCH USE ONLY. NOT FOR USE IN DIAGNOSTIC OR THERAPEUTIC PROCEDURES'.