

GPR173 Polyclonal Antibody

Catalog # AP70181

Product Information

Application	WB, IF
Primary Accession	Q9NS66
Reactivity	Human, Mouse, Rat
Host	Rabbit
Clonality	Polyclonal
Calculated MW	41481

Additional Information

Gene ID	54328
Other Names	GPR173; SREB3; Probable G-protein coupled receptor 173; Super conserved receptor expressed in brain 3
Dilution	WB~~Western Blot: 1/500 - 1/2000. Immunofluorescence: 1/200 - 1/1000. ELISA: 1/10000. Not yet tested in other applications. IF~~1:50~200
Format	Liquid in PBS containing 50% glycerol, 0.5% BSA and 0.09% (W/V) sodium azide.
Storage Conditions	-20°C

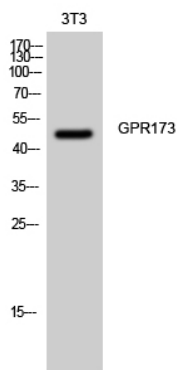
Protein Information

Name	GPR173
Synonyms	SREB3
Function	Is a receptor for the SMIM20 derived peptides Phoenixin-14 and Phoenixin-20 (By similarity). It mediates the Phoenixin-14 and Phoenixin-20 augmentation of gonadotropin-releasing hormone (GNRH) signaling in the hypothalamus and pituitary gland (By similarity). In the ovary, it mediates the effects of Phoenixin-14 and Phoenixin-20 induced granulosa cell proliferation during follicular growth (PubMed: 30933929).
Cellular Location	Cell membrane; Multi-pass membrane protein
Tissue Location	Expressed in the ovary, specifically in granulosa cells of follicles that have passed the primary stage and in oocytes (at protein level) (PubMed:30933929). Expressed at high levels in brain. Lower levels in small intestine. In brain regions, detected in all regions tested. Highest levels in the cerebellum and cerebral cortex.

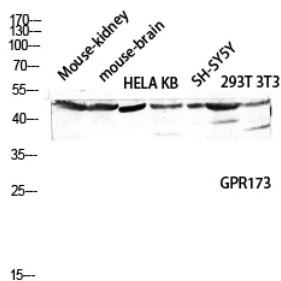
Background

Orphan receptor.

Images



Western Blot analysis of 3T3 cells using GPR173 Polyclonal Antibody diluted at 1 : 2000



Western blot analysis of Mouse-kidney mouse-brain HELA KB SH-SY5Y 293T 3T3 lysis using GPR173 antibody. Antibody was diluted at 1:2000

Please note: All products are 'FOR RESEARCH USE ONLY. NOT FOR USE IN DIAGNOSTIC OR THERAPEUTIC PROCEDURES'.