

# GPR175 Polyclonal Antibody

Catalog # AP70185

## Product Information

---

<b>Application</b>	WB, IF
<b>Primary Accession</b>	<a href="#">Q86W33</a>
<b>Reactivity</b>	Human, Mouse, Rat
<b>Host</b>	Rabbit
<b>Clonality</b>	Polyclonal
<b>Calculated MW</b>	41053

## Additional Information

---

<b>Gene ID</b>	131601
<b>Other Names</b>	TPRA1; GPR175; PP6566; Transmembrane protein adipocyte-associated 1; Integral membrane protein GPR175
<b>Dilution</b>	WB~~Western Blot: 1/500 - 1/2000. Immunofluorescence: 1/200 - 1/1000. ELISA: 1/20000. Not yet tested in other applications. IF~~1:50~200
<b>Format</b>	Liquid in PBS containing 50% glycerol, 0.5% BSA and 0.09% (W/V) sodium azide.
<b>Storage Conditions</b>	-20°C

## Protein Information

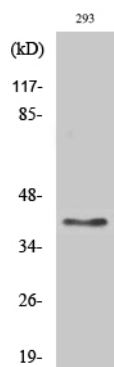
---

<b>Name</b>	TPRA1
<b>Synonyms</b>	GPR175, TMEM227
<b>Cellular Location</b>	Membrane; Multi-pass membrane protein.
<b>Tissue Location</b>	Ubiquitous, with higher levels in heart, placenta and kidney.

## Images

---

Western Blot analysis of various cells using GPR175  
Polyclonal Antibody diluted at 1 : 2000



Please note: All products are 'FOR RESEARCH USE ONLY. NOT FOR USE IN DIAGNOSTIC OR THERAPEUTIC PROCEDURES'.