

# GPR50 Polyclonal Antibody

Catalog # AP70207

## Product Information

---

Application	WB, IF
Primary Accession	<a href="#">Q13585</a>
Reactivity	Human
Host	Rabbit
Clonality	Polyclonal
Calculated MW	67369

## Additional Information

---

Gene ID	9248
Other Names	GPR50; Melatonin-related receptor; G protein-coupled receptor 50; H9
Dilution	WB~~Western Blot: 1/500 - 1/2000. Immunofluorescence: 1/200 - 1/1000. ELISA: 1/10000. Not yet tested in other applications. IF~~1:50~200
Format	Liquid in PBS containing 50% glycerol, 0.5% BSA and 0.09% (W/V) sodium azide.
Storage Conditions	-20°C

## Protein Information

---

Name	GPR50
Function	G protein-coupled receptor that plays a role in numerous physiological processes including regulation of energy metabolism, neurite outgrowth or cell migration (PubMed: <a href="#">19699797</a> ). Promotes self- renewal and neuronal differentiation of neural progenitor cells through activation of the NOTCH and WNT/beta-catenin signaling pathways (By similarity). Modulates the KAT5-dependent glucocorticoid receptor signaling by modulating KAT5 subcellular compartmentalisation (PubMed: <a href="#">21858214</a> ). Also plays a role in the activation TGFBR1 in the absence of TGFBR2 by interfering with FKBP1A binding to TGFBR1, leading to induction of both canonical and non-canonical SMAD signaling pathways resulting in inhibition of proliferation or promotion of migration (PubMed: <a href="#">29572483</a> ).
Cellular Location	Cell membrane; Multi-pass membrane protein. Postsynaptic density
Tissue Location	Hypothalamus and pituitary.

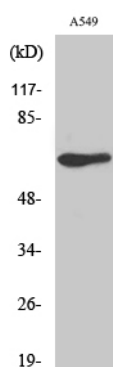
## Background

---

Does not bind melatonin.

## Images

---



Western Blot analysis of various cells using GPR50  
Polyclonal Antibody diluted at 1 : 1000

Please note: All products are 'FOR RESEARCH USE ONLY. NOT FOR USE IN DIAGNOSTIC OR THERAPEUTIC PROCEDURES'.