

# GPR82 Polyclonal Antibody

Catalog # AP70214

## Product Information

---

|                          |                        |
|--------------------------|------------------------|
| <b>Application</b>       | WB, E                  |
| <b>Primary Accession</b> | <a href="#">Q96P67</a> |
| <b>Reactivity</b>        | Human, Mouse           |
| <b>Host</b>              | Rabbit                 |
| <b>Clonality</b>         | Polyclonal             |
| <b>Calculated MW</b>     | 38409                  |

## Additional Information

---

|                           |  |
|---------------------------|--|
| <b>Gene ID</b>            | 27197  |
| <b>Other Names</b>        | GPR82; Probable G-protein coupled receptor 82  |
| <b>Dilution</b>           | WB~~Western Blot: 1/500 - 1/2000. ELISA: 1/10000. Not yet tested in other applications. E~~N/A |
| <b>Format</b>             | Liquid in PBS containing 50% glycerol, 0.5% BSA and 0.09% (W/V) sodium azide.                  |
| <b>Storage Conditions</b> | -20°C  |

## Protein Information

---

|                          |   |
|--------------------------|---|
| <b>Name</b>              | GPR82                                       |
| <b>Function</b>          | Orphan receptor.                            |
| <b>Cellular Location</b> | Cell membrane; Multi-pass membrane protein. |

## Background

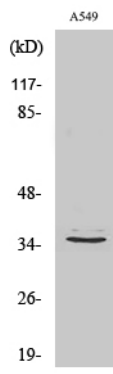
---

Orphan receptor.

## Images

---

Western Blot analysis of various cells using GPR82 Polyclonal Antibody



Please note: All products are 'FOR RESEARCH USE ONLY. NOT FOR USE IN DIAGNOSTIC OR THERAPEUTIC PROCEDURES'.