

GPR83 Polyclonal Antibody

Catalog # AP70215

Product Information

Application	WB
Primary Accession	Q9NYM4
Reactivity	Human
Host	Rabbit
Clonality	Polyclonal
Calculated MW	48339

Additional Information

Gene ID	10888
Other Names	GPR83; GPR72; KIAA1540; Probable G-protein coupled receptor 83; G-protein coupled receptor 72
Dilution	WB~~Western Blot: 1/500 - 1/2000. ELISA: 1/5000. Not yet tested in other applications.
Format	Liquid in PBS containing 50% glycerol, 0.5% BSA and 0.09% (W/V) sodium azide.
Storage Conditions	-20°C

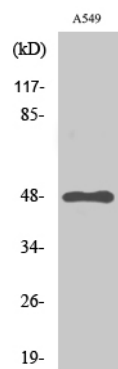
Protein Information

Name	GPR83 (HGNC:4523)
Function	G-protein coupled receptor for PEN, a neuropeptide produced from the precursor protein, proSAAS (encoded by PCSK1N). Acts through a G(i)- and G(q)-alpha-alpha-mediated pathway in response to PEN (PubMed: 27117253). Plays a role in food intake and body weight regulation. May contribute to the regulation of anxiety-related behaviors (By similarity).
Cellular Location	Cell membrane {ECO:0000250 UniProtKB:P30731}; Multi-pass membrane protein. Note=Colocalizes with GPR171 in the paraventricular nucleus. Colocalizes with the ghrelin receptor GHSR1A in the hypothalamus. {ECO:0000250 UniProtKB:P30731}
Tissue Location	Highly expressed in the brain and spinal cord, and found in lower concentrations in the thymus and other tissues

Background

Orphan receptor. Could be a neuropeptide Y receptor.

Images



Western Blot analysis of various cells using GPR83 Polyclonal Antibody

Please note: All products are 'FOR RESEARCH USE ONLY. NOT FOR USE IN DIAGNOSTIC OR THERAPEUTIC PROCEDURES'.