

GRASP55 Polyclonal Antibody

Catalog # AP70236

Product Information

Application	WB, IHC-P
Primary Accession	Q9H8Y8
Reactivity	Human, Mouse, Rat
Host	Rabbit
Clonality	Polyclonal
Calculated MW	47145

Additional Information

Gene ID	26003
Other Names	GORASP2; GOLPH6; Golgi reassembly-stacking protein 2; GRS2; Golgi phosphoprotein 6; GOLPH6; Golgi reassembly-stacking protein of 55 kDa; GRASP55; p59
Dilution	WB~~Western Blot: 1/500 - 1/2000. Immunohistochemistry: 1/100 - 1/300. ELISA: 1/40000. Not yet tested in other applications. IHC-P~~N/A
Format	Liquid in PBS containing 50% glycerol, 0.5% BSA and 0.09% (W/V) sodium azide.
Storage Conditions	-20°C

Protein Information

Name	GORASP2
Synonyms	GOLPH6
Function	Key structural protein of the Golgi apparatus (PubMed: 33301566). The membrane cisternae of the Golgi apparatus adhere to each other to form stacks, which are aligned side by side to form the Golgi ribbon (PubMed: 33301566). Acting in concert with GORASP1/GRASP65, is required for the formation and maintenance of the Golgi ribbon, and may be dispensable for the formation of stacks (PubMed: 33301566). However, other studies suggest that GORASP2 plays a role in the assembly and membrane stacking of the Golgi cisternae, and in the process by which Golgi stacks reform after breakdown during mitosis and meiosis (PubMed: 10487747 , PubMed: 21515684 , PubMed: 22523075). May regulate the intracellular transport and presentation of a defined set of transmembrane proteins, such as transmembrane TGFA (PubMed: 11101516). Required for normal acrosome formation during spermiogenesis and normal male fertility, probably by promoting colocalization of JAM2 and JAM3 at contact sites between germ

cells and Sertoli cells (By similarity). Mediates ER stress-induced unconventional (ER/Golgi-independent) trafficking of core-glycosylated CFTR to cell membrane (PubMed:[21884936](#), PubMed:[27062250](#), PubMed:[28067262](#)).

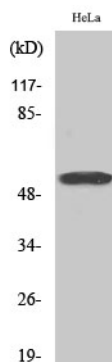
Cellular Location

Golgi apparatus membrane; Lipid-anchor. Endoplasmic reticulum membrane. Golgi apparatus. Note=Detected in the intermediate Golgi, membrane-associated (By similarity). ER stress triggers its relocalization from Golgi to ER membrane (PubMed:[27062250](#), PubMed:[28067262](#)). {ECO:0000250|UniProtKB:Q9R064, ECO:0000269|PubMed:[27062250](#), ECO:0000269|PubMed:[28067262](#)}

Background

Plays a role in the assembly and membrane stacking of the Golgi cisternae, and in the process by which Golgi stacks reform after breakdown during mitosis and meiosis (PubMed:[10487747](#), PubMed:[21515684](#), PubMed:[22523075](#)). May regulate the intracellular transport and presentation of a defined set of transmembrane proteins, such as transmembrane TGFA (PubMed:[11101516](#)). Required for normal acrosome formation during spermiogenesis and normal male fertility, probably by promoting colocalization of JAM2 and JAM3 at contact sites between germ cells and Sertoli cells (By similarity). Mediates ER stress-induced unconventional (ER/Golgi-independent) trafficking of core- glycosylated CFTR to cell membrane (PubMed:[21884936](#), PubMed:[27062250](#), PubMed:[28067262](#)).

Images



Western Blot analysis of various cells using GRASP55 Polyclonal Antibody

Please note: All products are 'FOR RESEARCH USE ONLY. NOT FOR USE IN DIAGNOSTIC OR THERAPEUTIC PROCEDURES'.