

GRP1 Polyclonal Antibody

Catalog # AP70259

Product Information

Application	WB, E
Primary Accession	O43739
Reactivity	Human, Mouse, Rat, Monkey
Host	Rabbit
Clonality	Polyclonal
Calculated MW	46349

Additional Information

Gene ID	9265
Other Names	CYTH3; ARNO3; GRP1; PSCD3; Cytohesin-3; ARF nucleotide-binding site opener 3; Protein ARNO3; General receptor of phosphoinositides 1; Grp1; PH; SEC7 and coiled-coil domain-containing protein 3
Dilution	WB~~Western Blot: 1/500 - 1/2000. ELISA: 1/10000. Not yet tested in other applications. E~~N/A
Format	Liquid in PBS containing 50% glycerol, 0.5% BSA and 0.09% (W/V) sodium azide.
Storage Conditions	-20°C

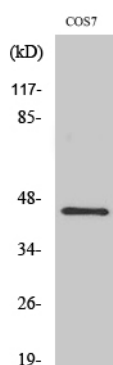
Protein Information

Name	CYTH3 (HGNC:9504)
Synonyms	ARNO3, GRP1, PSCD3
Function	Promotes guanine-nucleotide exchange on ARF1 and ARF6. Promotes the activation of ARF factors through replacement of GDP with GTP. Plays a role in the epithelial polarization (By similarity).
Cellular Location	Cytoplasm, cytosol. Cell membrane {ECO:0000250 UniProtKB:O08967}; Peripheral membrane protein {ECO:0000250 UniProtKB:O08967}. Cell junction, adherens junction {ECO:0000250 UniProtKB:O08967}. Cell junction, tight junction {ECO:0000250 UniProtKB:O08967}. Note=Translocates from the cytosol to membranes enriched in phosphatidylinositol 3,4,5-trisphosphate {ECO:0000250 UniProtKB:O08967}
Tissue Location	Almost absent from liver, thymus and peripheral blood lymphocytes

Background

Promotes guanine-nucleotide exchange on ARF1 and ARF6. Promotes the activation of ARF factors through replacement of GDP with GTP. Play a role in the epithelial polarization (By similarity).

Images



Western Blot analysis of various cells using GRP1 Polyclonal Antibody

Please note: All products are 'FOR RESEARCH USE ONLY. NOT FOR USE IN DIAGNOSTIC OR THERAPEUTIC PROCEDURES'.