

# HCCS Polyclonal Antibody

Catalog # AP70290

## Product Information

---

|                          |                        |
|--------------------------|------------------------|
| <b>Application</b>       | WB, IHC-P, IF, ICC, E  |
| <b>Primary Accession</b> | <a href="#">P53701</a> |
| <b>Reactivity</b>        | Human, Mouse, Monkey   |
| <b>Host</b>              | Rabbit                 |
| <b>Clonality</b>         | Polyclonal             |
| <b>Calculated MW</b>     | 30602                  |

## Additional Information

---

|                           |  |
|---------------------------|--|
| <b>Gene ID</b>            | 3052   |
| <b>Other Names</b>        | HCCS; CCHL; Cytochrome c-type heme lyase; CCHL; Holocytochrome c-type synthase   |
| <b>Dilution</b>           | WB~~Western Blot: 1/500 - 1/2000. Immunohistochemistry: 1/100 - 1/300. Immunofluorescence: 1/200 - 1/1000. ELISA: 1/20000. Not yet tested in other applications. IHC-P~~N/A IF~~1:50~200 ICC~~N/A E~~N/A |
| <b>Format</b>             | Liquid in PBS containing 50% glycerol, 0.5% BSA and 0.09% (W/V) sodium azide.  |
| <b>Storage Conditions</b> | -20°C  |

## Protein Information

---

|                          |   |
|--------------------------|---|
| <b>Name</b>              | HCCS ( <a href="#">HGNC:4837</a> )  |
| <b>Synonyms</b>          | CCHL  |
| <b>Function</b>          | Lyase that catalyzes the covalent linking of the heme group to the cytochrome C apoprotein to produce the mature functional cytochrome. |
| <b>Cellular Location</b> | Mitochondrion inner membrane. Membrane; Lipid-anchor  |

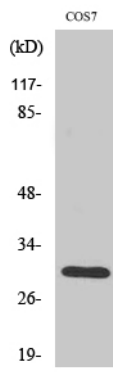
## Background

---

Links covalently the heme group to the apoprotein of cytochrome c.

## Images

---



Western Blot analysis of various cells using HCCS  
Polyclonal Antibody diluted at 1 : 2000

Please note: All products are 'FOR RESEARCH USE ONLY. NOT FOR USE IN DIAGNOSTIC OR THERAPEUTIC PROCEDURES'.