

HLA-DO α Polyclonal Antibody

Catalog # AP70360

Product Information

Application	WB, IHC-P
Primary Accession	P06340
Reactivity	Human
Host	Rabbit
Clonality	Polyclonal
Calculated MW	27599

Additional Information

Gene ID	3111
Other Names	HLA-DOA; HLA-DNA; HLA-DZA; HLA class II histocompatibility antigen; DO alpha chain; MHC DN-alpha; MHC DZ alpha; MHC class II antigen DOA
Dilution	WB~~Western Blot: 1/500 - 1/2000. Immunohistochemistry: 1/100 - 1/300. ELISA: 1/40000. Not yet tested in other applications. IHC-P~~N/A
Format	Liquid in PBS containing 50% glycerol, 0.5% BSA and 0.09% (W/V) sodium azide.
Storage Conditions	-20°C

Protein Information

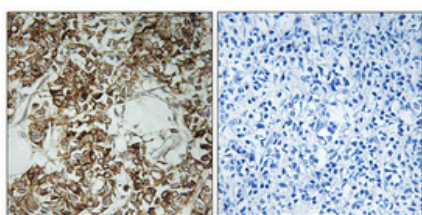
Name	HLA-DOA
Synonyms	HLA-DNA, HLA-DZA
Function	Important modulator in the HLA class II restricted antigen presentation pathway by interaction with the HLA-DM molecule in B- cells. Modifies peptide exchange activity of HLA-DM.
Cellular Location	Endosome membrane; Single-pass type I membrane protein. Lysosome membrane; Single-pass type I membrane protein Note=Complexes with HLA-DM molecule during intracellular transport and in endosomal/lysosomal compartments. Heterotetramerization is necessary to exit the ER

Background

Important modulator in the HLA class II restricted antigen presentation pathway by interaction with the HLA-DM molecule in B-cells. Modifies peptide exchange activity of HLA-DM.



Western Blot analysis of various cells using HLA-DOα Polyclonal Antibody



Immunohistochemical analysis of paraffin-embedded Human breast cancer. Antibody was diluted at 1:100(4°,overnight). High-pressure and temperature Tris-EDTA,pH8.0 was used for antigen retrieval. Negative contrl (right) obtaned from antibody was pre-absorbed by immunogen peptide.

Please note: All products are 'FOR RESEARCH USE ONLY. NOT FOR USE IN DIAGNOSTIC OR THERAPEUTIC PROCEDURES'.