

# HPK1 Polyclonal Antibody

Catalog # AP70408

## Product Information

---

Application	WB, IHC-P
Primary Accession	<a href="#">Q92918</a>
Reactivity	Human, Mouse
Host	Rabbit
Clonality	Polyclonal
Calculated MW	91296

## Additional Information

---

Gene ID	11184
Other Names	MAP4K1; HPK1; Mitogen-activated protein kinase kinase kinase 1; Hematopoietic progenitor kinase; MAPK/ERK kinase kinase 1; MEK kinase kinase 1; MEKKK 1
Dilution	WB~~Western Blot: 1/500 - 1/2000. ELISA: 1/10000. Not yet tested in other applications. IHC-P~~N/A
Format	Liquid in PBS containing 50% glycerol, 0.5% BSA and 0.09% (W/V) sodium azide.
Storage Conditions	-20°C

## Protein Information

---

Name	MAP4K1 ( <a href="#">HGNC:6863</a> )
Synonyms	HPK1
Function	Serine/threonine-protein kinase, which plays a role in the response to environmental stress (PubMed: <a href="#">24362026</a> ). Appears to act upstream of the JUN N-terminal pathway (PubMed: <a href="#">8824585</a> ). Activator of the Hippo signaling pathway which plays a pivotal role in organ size control and tumor suppression by restricting proliferation and promoting apoptosis. MAP4Ks act in parallel to and are partially redundant with STK3/MST2 and STK4/MST2 in the phosphorylation and activation of LATS1/2, and establish MAP4Ks as components of the expanded Hippo pathway (PubMed: <a href="#">26437443</a> ). May play a role in hematopoietic lineage decisions and growth regulation (PubMed: <a href="#">24362026</a> , PubMed: <a href="#">8824585</a> ). Together with CLNK, it enhances CD3-triggered activation of T-cells and subsequent IL2 production (By similarity).
Tissue Location	Expressed primarily in hematopoietic organs, including bone marrow, spleen

and thymus. Also expressed at very low levels in lung, kidney, mammary glands and small intestine

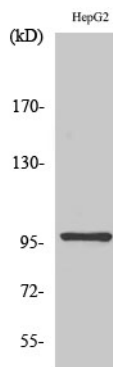
## Background

---

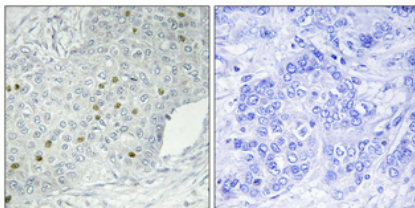
Serine/threonine-protein kinase, which may play a role in the response to environmental stress. Appears to act upstream of the JUN N-terminal pathway. May play a role in hematopoietic lineage decisions and growth regulation. Able to autophosphorylate.

## Images

---



Western Blot analysis of various cells using HPK1 Polyclonal Antibody diluted at 1 : 1000



Immunohistochemical analysis of paraffin-embedded Human breast cancer. Antibody was diluted at 1:100(4°,overnight). High-pressure and temperature Tris-EDTA,pH8.0 was used for antigen retrieval. Negative contrl (right) obtained from antibody was pre-absorbed by immunogen peptide.

Please note: All products are 'FOR RESEARCH USE ONLY. NOT FOR USE IN DIAGNOSTIC OR THERAPEUTIC PROCEDURES'.