

# HRF Polyclonal Antibody

Catalog # AP70409

## Product Information

---

Application	WB, IHC-P, IF, ICC, E
Primary Accession	<a href="#">P13693</a>
Reactivity	Human, Mouse, Rat
Host	Rabbit
Clonality	Polyclonal
Calculated MW	19595

## Additional Information

---

Gene ID	7178
Other Names	TPT1; Translationally-controlled tumor protein; TCTP; Fortilin; Histamine-releasing factor; HRF; p23
Dilution	WB~~Western Blot: 1/500 - 1/2000. Immunohistochemistry: 1/100 - 1/300. Immunofluorescence: 1/200 - 1/1000. ELISA: 1/20000. Not yet tested in other applications. IHC-P~~N/A IF~~1:50~200 ICC~~N/A E~~N/A
Format	Liquid in PBS containing 50% glycerol, 0.5% BSA and 0.09% (W/V) sodium azide.
Storage Conditions	-20°C

## Protein Information

---

Name	TPT1
Function	Involved in calcium binding and microtubule stabilization (PubMed: <a href="#">12167714</a> , PubMed: <a href="#">15162379</a> , PubMed: <a href="#">15958728</a> ). Acts as a negative regulator of TSC22D1-mediated apoptosis, via interaction with and destabilization of TSC22D1 protein (PubMed: <a href="#">18325344</a> ).
Cellular Location	Cytoplasm.
Tissue Location	Found in several healthy and tumoral cells including erythrocytes, hepatocytes, macrophages, platelets, keratinocytes, erythroleukemia cells, gliomas, melanomas, hepatoblastomas, and lymphomas. It cannot be detected in kidney and renal cell carcinoma (RCC). Expressed in placenta and prostate

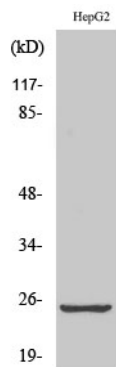
## Background

---

Involved in calcium binding and microtubule stabilization.

Images

---



Western Blot analysis of various cells using HRF Polyclonal Antibody

Please note: All products are 'FOR RESEARCH USE ONLY. NOT FOR USE IN DIAGNOSTIC OR THERAPEUTIC PROCEDURES'.