

# HSFX1 Polyclonal Antibody

Catalog # AP70422

## Product Information

---

Application	WB
Primary Accession	<a href="#">Q9UBD0</a>
Reactivity	Human
Host	Rabbit
Clonality	Polyclonal
Calculated MW	46742

## Additional Information

---

Gene ID	100130086;100506164
Other Names	HSFX1; LW-1; HSFX2; Heat shock transcription factor; X-linked
Dilution	WB~~Western Blot: 1/500 - 1/2000. ELISA: 1/10000. Not yet tested in other applications.
Format	Liquid in PBS containing 50% glycerol, 0.5% BSA and 0.09% (W/V) sodium azide.
Storage Conditions	-20°C

## Protein Information

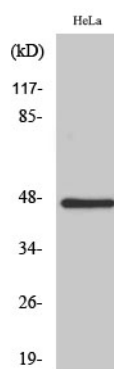
---

Name	HSFX1
Synonyms	LW-1
Cellular Location	Nucleus. Cytoplasm
Tissue Location	Testis-specific..

## Images

---

Western Blot analysis of various cells using HSFX1  
Polyclonal Antibody



Please note: All products are 'FOR RESEARCH USE ONLY. NOT FOR USE IN DIAGNOSTIC OR THERAPEUTIC PROCEDURES'.