

HSP60 Polyclonal Antibody

Catalog # AP70438

Product Information

Application	WB, IHC-P
Primary Accession	Q0VDF9
Reactivity	Human, Mouse, Rat
Host	Rabbit
Clonality	Polyclonal
Calculated MW	54794

Additional Information

Gene ID	51182
Other Names	HSPA14; HSP60; HSP70L1; Heat shock 70 kDa protein 14; HSP70-like protein 1; Heat shock protein HSP60
Dilution	WB~~Western Blot: 1/500 - 1/2000. Immunohistochemistry: 1/100 - 1/300. ELISA: 1/40000. Not yet tested in other applications. IHC-P~~N/A
Format	Liquid in PBS containing 50% glycerol, 0.5% BSA and 0.09% (W/V) sodium azide.
Storage Conditions	-20°C

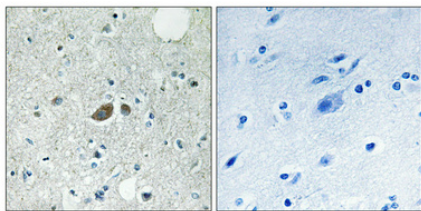
Protein Information

Name	HSPA14
Synonyms	HSP60, HSP70L1
Function	Component of the ribosome-associated complex (RAC), a complex involved in folding or maintaining nascent polypeptides in a folding- competent state. In the RAC complex, binds to the nascent polypeptide chain, while DNAJC2 stimulates its ATPase activity.
Cellular Location	Cytoplasm, cytosol.

Background

Component of the ribosome-associated complex (RAC), a complex involved in folding or maintaining nascent polypeptides in a folding-competent state. In the RAC complex, binds to the nascent polypeptide chain, while DNAJC2 stimulates its ATPase activity.

Images



Immunohistochemical analysis of paraffin-embedded Human brain. Antibody was diluted at 1:100(4°,overnight). High-pressure and temperature Tris-EDTA,pH8.0 was used for antigen retrieval. Negative contrl (right) obtaned from antibody was pre-absorbed by immunogen peptide.

Please note: All products are 'FOR RESEARCH USE ONLY. NOT FOR USE IN DIAGNOSTIC OR THERAPEUTIC PROCEDURES'.