

# PKLR Antibody (C-term)

Purified Rabbit Polyclonal Antibody (Pab)

Catalog # AP7043b

## Product Information

---

<b>Application</b>	IHC-P, WB, E
<b>Primary Accession</b>	<a href="#">P30613</a>
<b>Other Accession</b>	<a href="#">P12928</a> , <a href="#">P53657</a>
<b>Reactivity</b>	Human, Mouse
<b>Predicted</b>	Rat
<b>Host</b>	Rabbit
<b>Clonality</b>	Polyclonal
<b>Isotype</b>	Rabbit IgG
<b>Clone Names</b>	RB3694
<b>Calculated MW</b>	61830
<b>Antigen Region</b>	521-551

## Additional Information

---

<b>Gene ID</b>	5313
<b>Other Names</b>	Pyruvate kinase PKLR, Pyruvate kinase 1, Pyruvate kinase isozymes L/R, R-type/L-type pyruvate kinase, Red cell/liver pyruvate kinase, PKLR, PK1, PKL
<b>Target/Specificity</b>	This PKLR antibody is generated from rabbits immunized with a KLH conjugated synthetic peptide between 521-551 amino acids from the C-terminal region of human PKLR.
<b>Dilution</b>	IHC-P~~1:100~500 WB~~1:1000 E~~Use at an assay dependent concentration.
<b>Format</b>	Purified polyclonal antibody supplied in PBS with 0.09% (W/V) sodium azide. This antibody is prepared by Saturated Ammonium Sulfate (SAS) precipitation followed by dialysis against PBS.
<b>Storage</b>	Maintain refrigerated at 2-8°C for up to 2 weeks. For long term storage store at -20°C in small aliquots to prevent freeze-thaw cycles.
<b>Precautions</b>	PKLR Antibody (C-term) is for research use only and not for use in diagnostic or therapeutic procedures.

## Protein Information

---

<b>Name</b>	PKLR
<b>Synonyms</b>	PK1, PKL

## Function

Pyruvate kinase that catalyzes the conversion of phosphoenolpyruvate to pyruvate with the synthesis of ATP, and which plays a key role in glycolysis.

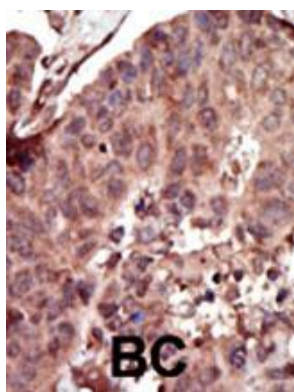
## Background

PKLR is a pyruvate kinase that catalyzes the production of phosphoenolpyruvate from pyruvate and ATP. Defects in this enzyme, due to gene mutations or genetic variations, are the common cause of chronic hereditary nonspherocytic hemolytic anemia (CNSHA or HNSHA).

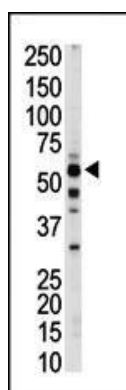
## References

Wang, H., et al., Diabetes 51(9):2861-2865 (2002).  
Valentini, G., et al., J. Biol. Chem. 277(26):23807-23814 (2002).  
Mateu, E., et al., Hum. Genet. 110(6):532-544 (2002).  
Indo, Y., et al., Hum. Mutat. 18(4):308-318 (2001).  
Acan, N.L., et al., J. Enzym. Inhib. 16(5):457-464 (2001).

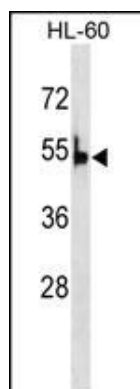
## Images



Formalin-fixed and paraffin-embedded human cancer tissue reacted with the primary antibody, which was peroxidase-conjugated to the secondary antibody, followed by AEC staining. This data demonstrates the use of this antibody for immunohistochemistry; clinical relevance has not been evaluated. BC = breast carcinoma; HC = hepatocarcinoma.



The anti-PKLR Pab (Cat. #AP7043b) is used in Western blot to detect PKLR in mouse liver tissue lysate.



PKLR Antibody (G536) (Cat. #AP7043b) western blot analysis in HL-60 cell line lysates (35ug/lane). This demonstrates the PKLR antibody detected the PKLR protein (arrow).

Please note: All products are 'FOR RESEARCH USE ONLY. NOT FOR USE IN DIAGNOSTIC OR THERAPEUTIC PROCEDURES'.