

ICAM-1 Polyclonal Antibody

Catalog # AP70452

Product Information

Application	WB, IHC-P
Primary Accession	P05362
Reactivity	Human
Host	Rabbit
Clonality	Polyclonal
Calculated MW	57825

Additional Information

Gene ID	3383
Other Names	ICAM1; Intercellular adhesion molecule 1; ICAM-1; Major group rhinovirus receptor; CD antigen CD54
Dilution	WB~~Western Blot: 1/500 - 1/2000. ELISA: 1/10000. Not yet tested in other applications. IHC-P~~N/A
Format	Liquid in PBS containing 50% glycerol, 0.5% BSA and 0.09% (W/V) sodium azide.
Storage Conditions	-20°C

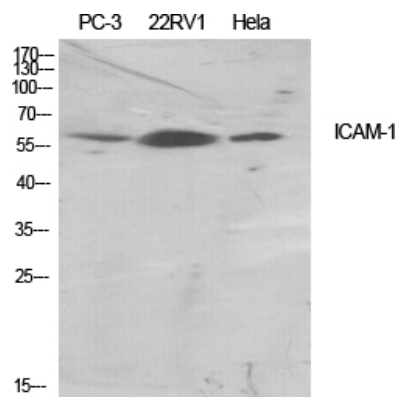
Protein Information

Name	ICAM1
Function	ICAM proteins are ligands for the leukocyte adhesion protein LFA-1 (integrin alpha-L/beta-2). During leukocyte trans-endothelial migration, ICAM1 engagement promotes the assembly of endothelial apical cups through ARHGEF26/SGEF and RHOG activation.
Cellular Location	Membrane; Single-pass type I membrane protein.

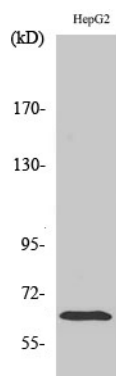
Background

ICAM proteins are ligands for the leukocyte adhesion protein LFA-1 (integrin alpha-L/beta-2). During leukocyte trans- endothelial migration, ICAM1 engagement promotes the assembly of endothelial apical cups through ARHGEF26/SGEF and RHOG activation.

Images



Western Blot analysis of various cells using ICAM-1
 Polyclonal Antibody diluted at 1 : 500



Western Blot analysis of HepG2 cells using ICAM-1
 Polyclonal Antibody diluted at 1 : 500

Please note: All products are 'FOR RESEARCH USE ONLY. NOT FOR USE IN DIAGNOSTIC OR THERAPEUTIC PROCEDURES'.