

IGSF4C Polyclonal Antibody

Catalog # AP70478

Product Information

Application	WB, IHC-P, IF, ICC, E
Primary Accession	Q8NFZ8
Reactivity	Human, Mouse, Rat
Host	Rabbit
Clonality	Polyclonal
Calculated MW	42785

Additional Information

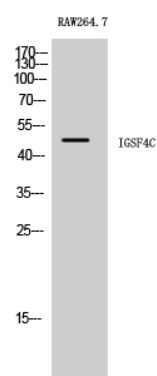
Gene ID	199731
Other Names	CADM4; IGSF4C; NECL4; TSLL2; Cell adhesion molecule 4; Immunoglobulin superfamily member 4C; IgSF4C; Nectin-like protein 4; NECL-4; TSLC1-like protein 2
Dilution	WB~~Western Blot: 1/500 - 1/2000. Immunohistochemistry: 1/100 - 1/300. Immunofluorescence: 1/200 - 1/1000. ELISA: 1/20000. Not yet tested in other applications. IHC-P~~N/A IF~~1:50~200 ICC~~N/A E~~N/A
Format	Liquid in PBS containing 50% glycerol, 0.5% BSA and 0.09% (W/V) sodium azide.
Storage Conditions	-20°C

Protein Information

Name	CADM4
Synonyms	IGSF4C, NECL4, TSLL2
Function	Involved in the cell-cell adhesion. Has calcium- and magnesium-independent cell-cell adhesion activity. May have tumor- suppressor activity.
Cellular Location	Membrane; Single-pass type I membrane protein
Tissue Location	Expressed in brain, prostate, brain, kidney and some other organs.

Background

Involved in the cell-cell adhesion. Has calcium- and magnesium-independent cell-cell adhesion activity. May have tumor- suppressor activity.



Western Blot analysis of RAW264.7 cells using IGSF4C Polyclonal Antibody

Please note: All products are 'FOR RESEARCH USE ONLY. NOT FOR USE IN DIAGNOSTIC OR THERAPEUTIC PROCEDURES'.