

IGSF4D Polyclonal Antibody

Catalog # AP70479

Product Information

Application	WB, IHC-P, IF
Primary Accession	Q8N3J6
Reactivity	Human, Mouse, Rat
Host	Rabbit
Clonality	Polyclonal
Calculated MW	47554

Additional Information

Gene ID	253559
Other Names	CADM2; IGSF4D; NECL3; Cell adhesion molecule 2; Immunoglobulin superfamily member 4D; IgSF4D; Nectin-like protein 3; NECL-3; Synaptic cell adhesion molecule 2; SynCAM 2
Dilution	WB~~Western Blot: 1/500 - 1/2000. Immunohistochemistry: 1/100 - 1/300. Immunofluorescence: 1/200 - 1/1000. ELISA: 1/10000. Not yet tested in other applications. IHC-P~~N/A IF~~1:50~200
Format	Liquid in PBS containing 50% glycerol, 0.5% BSA and 0.09% (W/V) sodium azide.
Storage Conditions	-20°C

Protein Information

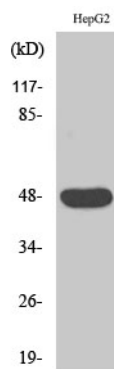
Name	CADM2
Synonyms	IGSF4D, NECL3
Function	Adhesion molecule that engages in homo- and heterophilic interactions with the other nectin-like family members, leading to cell aggregation. Important for synapse organization, providing regulated trans-synaptic adhesion. Preferentially binds to oligodendrocytes.
Cellular Location	Cell membrane; Single-pass type I membrane protein Synapse. Cell projection, axon. Note=Found in the axoplasm of myelinated axons

Background

Adhesion molecule that engages in homo- and heterophilic interactions with the other nectin-like family members, leading to cell aggregation. Important for synapse organization, providing regulated

trans-synaptic adhesion. Preferentially binds to oligodendrocytes.

Images



Western Blot analysis of various cells using IGSF4D Polyclonal Antibody

Please note: All products are 'FOR RESEARCH USE ONLY. NOT FOR USE IN DIAGNOSTIC OR THERAPEUTIC PROCEDURES'.