

# IK Polyclonal Antibody

Catalog # AP70480

## Product Information

---

Application	WB, IHC-P
Primary Accession	<a href="#">Q13123</a>
Reactivity	Human, Mouse, Rat
Host	Rabbit
Clonality	Polyclonal
Calculated MW	65602

## Additional Information

---

Gene ID	3550
Other Names	IK; RED; RER; Protein Red; Cytokine IK; IK factor; Protein RER
Dilution	WB~~Western Blot: 1/500 - 1/2000. Immunohistochemistry: 1/100 - 1/300. ELISA: 1/20000. Not yet tested in other applications. IHC-P~~N/A
Format	Liquid in PBS containing 50% glycerol, 0.5% BSA and 0.09% (W/V) sodium azide.
Storage Conditions	-20°C

## Protein Information

---

Name	IK
Synonyms	RED {ECO:0000303 PubMed:10216252}, RER
Function	Involved in pre-mRNA splicing as a component of the spliceosome (PubMed: <a href="#">28781166</a> ). Auxiliary spliceosomal protein that regulates selection of alternative splice sites in a small set of target pre-mRNA species (Probable). Required for normal mitotic cell cycle progression (PubMed: <a href="#">22351768</a> , PubMed: <a href="#">24252166</a> ). Recruits MAD1L1 and MAD2L1 to kinetochores, and is required to trigger the spindle assembly checkpoint (PubMed: <a href="#">22351768</a> ). Required for normal accumulation of SMU1 (PubMed: <a href="#">24945353</a> ).
Cellular Location	Nucleus. Nucleus, nucleoplasm. Chromosome. Cytoplasm, cytoskeleton, spindle pole. Note=Predominantly present throughout the nucleoplasm during prometaphase, metaphase and anaphase. Is also detected in nuclear foci that are not identical with Cajal bodies Starts to accumulate at chromosomes during telophase, and is nearly exclusively associated with chromosomes in newly divided cells (PubMed:24252166). Colocalizes with MAD1L1 at mitotic spindle poles during metaphase and anaphase (PubMed:22351768)

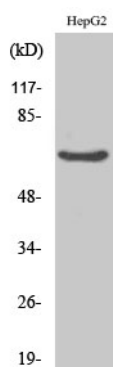
## Tissue Location

Ubiquitous..

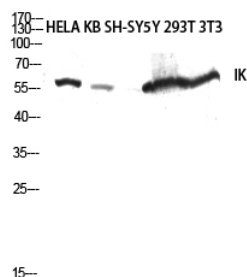
## Background

Involved in pre-mRNA splicing as a component of the spliceosome (PubMed: [28781166](#)). Auxiliary spliceosomal protein that regulates selection of alternative splice sites in a small set of target pre-mRNA species (Probable). Required for normal mitotic cell cycle progression (PubMed:[22351768](#), PubMed:[24252166](#)). Recruits MAD1L1 and MAD2L1 to kinetochores, and is required to trigger the spindle assembly checkpoint (PubMed:[22351768](#)). Required for normal accumulation of SMU1 (PubMed:[24945353](#)).

## Images



Western Blot analysis of various cells using IK Polyclonal Antibody diluted at 1 : 2000 cells nucleus extracted by Minute TM Cytoplasmic and Nuclear Fractionation kit (SC-003, Inventbiotech, MN, USA).



Western blot analysis of HELA KB SH-SY5Y 293T 3T3 lysis using IK antibody. Antibody was diluted at 1:2000 cells nucleus extracted by Minute TM Cytoplasmic and Nuclear Fractionation kit (SC-003, Inventbiotech, MN, USA).

Please note: All products are 'FOR RESEARCH USE ONLY. NOT FOR USE IN DIAGNOSTIC OR THERAPEUTIC PROCEDURES'.