

# IL-20R $\alpha$ Polyclonal Antibody

Catalog # AP70508

## Product Information

---

<b>Application</b>	WB, IHC-P
<b>Primary Accession</b>	<a href="#">Q9UHF4</a>
<b>Reactivity</b>	Human
<b>Host</b>	Rabbit
<b>Clonality</b>	Polyclonal
<b>Calculated MW</b>	62485

## Additional Information

---

<b>Gene ID</b>	53832
<b>Other Names</b>	IL20RA; Interleukin-20 receptor subunit alpha; IL-20 receptor subunit alpha; IL-20R-alpha; IL-20RA; Cytokine receptor class-II member 8; Cytokine receptor family 2 member 8; CRF2-8; IL-20R1; ZcytoR7
<b>Dilution</b>	WB~~Western Blot: 1/500 - 1/2000. Immunohistochemistry: 1/100 - 1/300. ELISA: 1/40000. Not yet tested in other applications. IHC-P~~N/A
<b>Format</b>	Liquid in PBS containing 50% glycerol, 0.5% BSA and 0.09% (W/V) sodium azide.
<b>Storage Conditions</b>	-20°C

## Protein Information

---

<b>Name</b>	IL20RA
<b>Function</b>	The IL20RA/IL20RB dimer is a receptor for IL19, IL20 and IL24. The IL20RA/IL10RB dimer is a receptor for IL26.
<b>Cellular Location</b>	Membrane; Single-pass type I membrane protein
<b>Tissue Location</b>	Widely expressed with highest levels in skin and testis and high levels in brain. Highly expressed in psoriatic skin

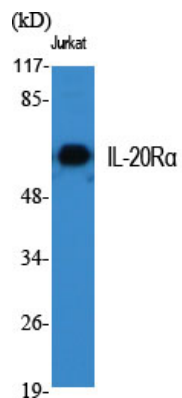
## Background

---

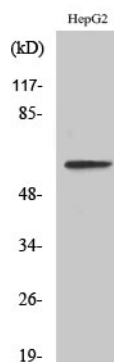
The IL20RA/IL20RB dimer is a receptor for IL19, IL20 and IL24. The IL20RA/IL10RB dimer is a receptor for IL26.

## Images

---



Western Blot analysis of various cells using IL-20Rα Polyclonal Antibody



Western Blot analysis of LOVO cells using IL-20Rα Polyclonal Antibody

Please note: All products are 'FOR RESEARCH USE ONLY. NOT FOR USE IN DIAGNOSTIC OR THERAPEUTIC PROCEDURES'.