

# IL-3R $\beta$ Polyclonal Antibody

Catalog # AP70516

## Product Information

---

Application	WB, IHC-P, IF, ICC, E
Primary Accession	<a href="#">P32927</a>
Reactivity	Human, Mouse, Rat
Host	Rabbit
Clonality	Polyclonal
Calculated MW	97336

## Additional Information

---

Gene ID	1439
Other Names	CSF2RB; IL3RB; IL5RB; Cytokine receptor common subunit beta; CDw131; GM-CSF/IL-3/IL-5 receptor common beta subunit; CD antigen CD131
Dilution	WB~~Western Blot: 1/500 - 1/2000. Immunohistochemistry: 1/100 - 1/300. ELISA: 1/5000. Not yet tested in other applications. IHC-P~~Western Blot: 1/500 - 1/2000. Immunohistochemistry: 1/100 - 1/300. ELISA: 1/5000. Not yet tested in other applications. IF~~1:50~200 ICC~~N/A E~~N/A
Format	Liquid in PBS containing 50% glycerol, 0.5% BSA and 0.09% (W/V) sodium azide.
Storage Conditions	-20°C

## Protein Information

---

Name	CSF2RB
Synonyms	IL3RB, IL5RB
Function	Cell surface receptor that plays a role in immune response and controls the production and differentiation of hematopoietic progenitor cells into lineage-restricted cells. Acts by forming an heterodimeric receptor through interaction with different partners such as IL3RA, IL5RA or CSF2RA (PubMed: <a href="#">1495999</a> ). In turn, participates in various signaling pathways including interleukin-3, interleukin-5 and granulocyte-macrophage colony-stimulating factor/CSF2 pathways. In unstimulated conditions, interacts constitutively with JAK1 and ligand binding leads to JAK1 stimulation and subsequent activation of the JAK- STAT pathway (PubMed: <a href="#">9516124</a> ).
Cellular Location	Membrane; Single-pass type I membrane protein.

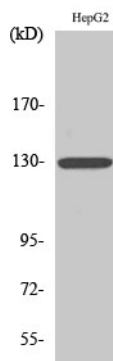
## Background

---

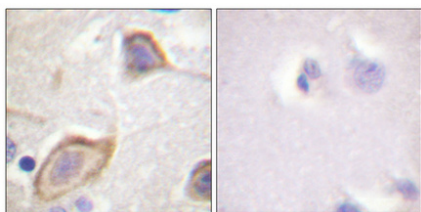
High affinity receptor for interleukin-3, interleukin-5 and granulocyte-macrophage colony-stimulating factor.

## Images

---



Western Blot analysis of various cells using IL-3R $\beta$  Polyclonal Antibody



Immunohistochemical analysis of paraffin-embedded Human brain. Antibody was diluted at 1:100(4°,overnight). High-pressure and temperature Tris-EDTA,pH8.0 was used for antigen retrieval. Negative contrl (right) obtained from antibody was pre-absorbed by immunogen peptide.

Please note: All products are 'FOR RESEARCH USE ONLY. NOT FOR USE IN DIAGNOSTIC OR THERAPEUTIC PROCEDURES'.