

# IL-4R $\alpha$ Polyclonal Antibody

Catalog # AP70520

## Product Information

---

Application	WB, IF
Primary Accession	<a href="#">P24394</a>
Reactivity	Human, Mouse
Host	Rabbit
Clonality	Polyclonal
Calculated MW	89658

## Additional Information

---

Gene ID	3566
Other Names	IL4R; IL4RA; 582J2.1; Interleukin-4 receptor subunit alpha; IL-4 receptor subunit alpha; IL-4R subunit alpha; IL-4R-alpha; IL-4RA; CD antigen CD124
Dilution	WB~~Western Blot: 1/500 - 1/2000. Immunofluorescence: 1/200 - 1/1000. ELISA: 1/20000. Not yet tested in other applications. IF~~1:50~200
Format	Liquid in PBS containing 50% glycerol, 0.5% BSA and 0.09% (W/V) sodium azide.
Storage Conditions	-20°C

## Protein Information

---

Name	IL4R
Synonyms	IL4RA
Function	Receptor for both interleukin 4 and interleukin 13 (PubMed: <a href="#">17030238</a> ). Couples to the JAK1/2/3-STAT6 pathway. The IL4 response is involved in promoting Th2 differentiation. The IL4/IL13 responses are involved in regulating IgE production and, chemokine and mucus production at sites of allergic inflammation. In certain cell types, can signal through activation of insulin receptor substrates, IRS1/IRS2.
Cellular Location	Cell membrane; Single-pass type I membrane protein
Tissue Location	Isoform 1 and isoform 2 are highly expressed in activated T-cells

## Background

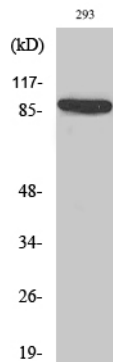
---

Receptor for both interleukin 4 and interleukin 13. Couples to the JAK1/2/3-STAT6 pathway. The IL4

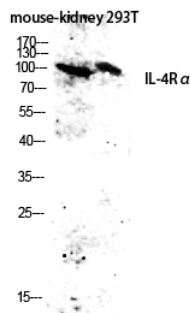
response is involved in promoting Th2 differentiation. The IL4/IL13 responses are involved in regulating IgE production and, chemokine and mucus production at sites of allergic inflammation. In certain cell types, can signal through activation of insulin receptor substrates, IRS1/IRS2.

## Images

---



Western Blot analysis of various cells using IL-4Ra  
Polyclonal Antibody diluted at 1 : 2000



Western blot analysis of mouse-kidney 293T lysis using  
IL-4Ra antibody. Antibody was diluted at 1:2000

Please note: All products are 'FOR RESEARCH USE ONLY. NOT FOR USE IN DIAGNOSTIC OR THERAPEUTIC PROCEDURES'.