

Integrin β 5 Polyclonal Antibody

Catalog # AP70556

Product Information

| | |
|-------------------|---------------------------|
| Application | WB, E |
| Primary Accession | P18084 |
| Reactivity | Human, Mouse, Rat, Monkey |
| Host | Rabbit |
| Clonality | Polyclonal |
| Calculated MW | 88054 |

Additional Information

| | |
|--------------------|--|
| Gene ID | 3693 |
| Other Names | ITGB5; Integrin beta-5 |
| Dilution | WB~~Western Blot: 1/500 - 1/2000. ELISA: 1/20000. Not yet tested in other applications. E~~N/A |
| Format | Liquid in PBS containing 50% glycerol, 0.5% BSA and 0.09% (W/V) sodium azide. |
| Storage Conditions | -20°C |

Protein Information

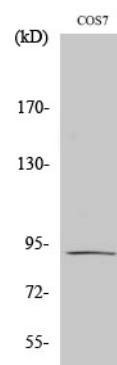
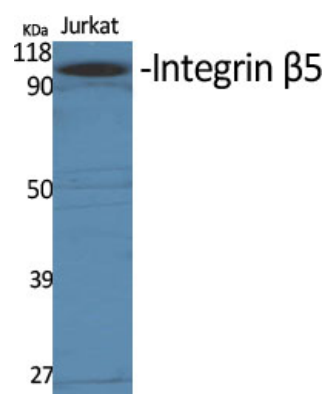
| | |
|-------------------|--|
| Name | ITGB5 |
| Function | Integrin alpha-V/beta-5 (ITGAV:ITGB5) is a receptor for fibronectin. It recognizes the sequence R-G-D in its ligand. |
| Cellular Location | Cell membrane; Single-pass type I membrane protein |

Background

Integrin alpha-V/beta-5 (ITGAV:ITGB5) is a receptor for fibronectin. It recognizes the sequence R-G-D in its ligand.

Images

Western Blot analysis of various cells using Integrin β 5 Polyclonal Antibody diluted at 1 : 1000



Western Blot analysis of COS7 cells using Integrin $\beta 5$
 Polyclonal Antibody diluted at 1 : 1000

Please note: All products are 'FOR RESEARCH USE ONLY. NOT FOR USE IN DIAGNOSTIC OR THERAPEUTIC PROCEDURES'.