

Involucrin Polyclonal Antibody

Catalog # AP70560

Product Information

Application	WB, IHC-P
Primary Accession	P07476
Reactivity	Human
Host	Rabbit
Clonality	Polyclonal
Calculated MW	68479

Additional Information

Gene ID	3713
Other Names	IVL; Involucrin
Dilution	WB~~Western Blot: 1/500 - 1/2000. Immunohistochemistry: 1/100 - 1/300. ELISA: 1/20000. Not yet tested in other applications. IHC-P~~N/A
Format	Liquid in PBS containing 50% glycerol, 0.5% BSA and 0.09% (W/V) sodium azide.
Storage Conditions	-20°C

Protein Information

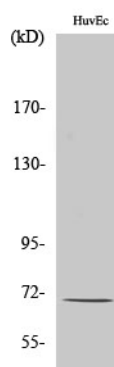
Name	IVL
Function	Part of the insoluble cornified cell envelope (CE) of stratified squamous epithelia.
Cellular Location	Cytoplasm. Note=Constituent of the scaffolding of the cornified envelope
Tissue Location	Keratinocytes of epidermis and other stratified squamous epithelia

Background

Part of the insoluble cornified cell envelope (CE) of stratified squamous epithelia.

Images

Western Blot analysis of various cells using Involucrin Polyclonal Antibody



Please note: All products are 'FOR RESEARCH USE ONLY. NOT FOR USE IN DIAGNOSTIC OR THERAPEUTIC PROCEDURES'.