

# JIP-3 Polyclonal Antibody

Catalog # AP70619

## Product Information

---

Application	WB, IHC-P, IF
Primary Accession	<a href="#">Q9UPT6</a>
Reactivity	Human, Mouse
Host	Rabbit
Clonality	Polyclonal
Calculated MW	147457

## Additional Information

---

Gene ID	23162
Other Names	MAPK8IP3; JIP3; KIAA1066; C-Jun-amino-terminal kinase-interacting protein 3; JIP-3; JNK-interacting protein 3; JNK MAP kinase scaffold protein 3; Mitogen-activated protein kinase 8-interacting protein 3
Dilution	WB~~Western Blot: 1/500 - 1/2000. Immunohistochemistry: 1/100 - 1/300. Immunofluorescence: 1/200 - 1/1000. ELISA: 1/20000. Not yet tested in other applications. IHC-P~~N/A IF~~1:50~200
Format	Liquid in PBS containing 50% glycerol, 0.5% BSA and 0.09% (W/V) sodium azide.
Storage Conditions	-20°C

## Protein Information

---

Name	MAPK8IP3
Synonyms	JIP3, KIAA1066
Function	The JNK-interacting protein (JIP) group of scaffold proteins selectively mediates JNK signaling by aggregating specific components of the MAPK cascade to form a functional JNK signaling module (PubMed: <a href="#">12189133</a> ). May function as a regulator of vesicle transport, through interactions with the JNK-signaling components and motor proteins (By similarity). Promotes neuronal axon elongation in a kinesin- and JNK-dependent manner. Activates cofilin at axon tips via local activation of JNK, thereby regulating filopodial dynamics and enhancing axon elongation. Its binding to kinesin heavy chains (KHC), promotes kinesin-1 motility along microtubules and is essential for axon elongation and regeneration. Regulates cortical neuronal migration by mediating NTRK2/TRKB anterograde axonal transport during brain development (By similarity). Acts as an adapter that bridges the interaction between NTRK2/TRKB and KLC1 and drives NTRK2/TRKB axonal but not

dendritic anterograde transport, which is essential for subsequent BDNF-triggered signaling and filopodia formation (PubMed:[21775604](#)).

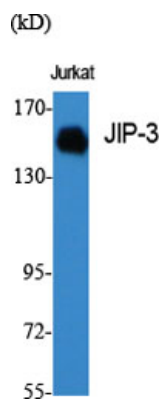
## Cellular Location

Cytoplasm {ECO:0000250|UniProtKB:Q9ESN9}. Golgi apparatus {ECO:0000250|UniProtKB:Q9ESN9}. Cytoplasmic vesicle {ECO:0000250|UniProtKB:Q9ESN9}. Cell projection, growth cone {ECO:0000250|UniProtKB:Q9ESN9}. Cell projection, axon {ECO:0000250|UniProtKB:Q9ESN9}. Cell projection, dendrite {ECO:0000250|UniProtKB:E9PSK7}. Cytoplasm, perinuclear region {ECO:0000250|UniProtKB:E9PSK7}. Note=Localized in the soma and growth cones of differentiated neurites and the Golgi and vesicles of the early secretory compartment of epithelial cells. KIF5A/B/C-mediated transportation to axon tips is essential for its function in enhancing neuronal axon elongation. {ECO:0000250|UniProtKB:E9PSK7, ECO:0000250|UniProtKB:Q9ESN9}

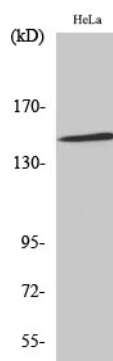
## Background

The JNK-interacting protein (JIP) group of scaffold proteins selectively mediates JNK signaling by aggregating specific components of the MAPK cascade to form a functional JNK signaling module (PubMed:[12189133](#)). May function as a regulator of vesicle transport, through interactions with the JNK-signaling components and motor proteins (By similarity). Promotes neuronal axon elongation in a kinesin- and JNK-dependent manner. Activates cofilin at axon tips via local activation of JNK, thereby regulating filopodial dynamics and enhancing axon elongation. Its binding to kinesin heavy chains (KHC), promotes kinesin-1 motility along microtubules and is essential for axon elongation and regeneration. Regulates cortical neuronal migration by mediating NTRK2/TRKB anterograde axonal transport during brain development (By similarity). Acts as an adapter that bridges the interaction between NTRK2/TRKB and KLC1 and drives NTRK2/TRKB axonal but not dendritic anterograde transport, which is essential for subsequent BDNF-triggered signaling and filopodia formation (PubMed:[21775604](#)).

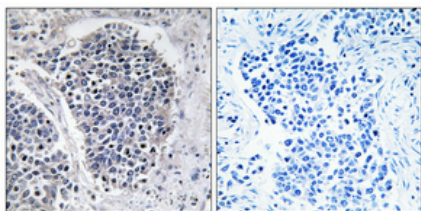
## Images



Western Blot analysis of various cells using JIP-3  
Polyclonal Antibody diluted at 1 : 1000



Western Blot analysis of HeLa cells using JIP-3 Polyclonal  
Antibody diluted at 1 : 1000



Immunohistochemical analysis of paraffin-embedded Human lung cancer. Antibody was diluted at 1:100(4°,overnight). High-pressure and temperature Tris-EDTA,pH8.0 was used for antigen retrieval. Negative contrl (right) obtaned from antibody was pre-absorbed by immunogen peptide.

Please note: All products are 'FOR RESEARCH USE ONLY. NOT FOR USE IN DIAGNOSTIC OR THERAPEUTIC PROCEDURES'.