

KALIG-1 Polyclonal Antibody

Catalog # AP70631

Product Information

Application	WB
Primary Accession	P23352
Reactivity	Human
Host	Rabbit
Clonality	Polyclonal
Calculated MW	76112

Additional Information

Gene ID	3730
Other Names	KAL1; ADMLX; KAL; KALIG1; Anosmin-1; Adhesion molecule-like X-linked; Kallmann syndrome protein
Dilution	WB~~Western Blot: 1/500 - 1/2000. ELISA: 1/10000. Not yet tested in other applications.
Format	Liquid in PBS containing 50% glycerol, 0.5% BSA and 0.09% (W/V) sodium azide.
Storage Conditions	-20°C

Protein Information

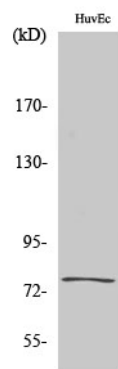
Name	ANOS1 (HGNC:6211)
Synonyms	ADMLX, KAL, KAL1, KALIG1
Function	Has a dual branch-promoting and guidance activity, which may play an important role in the patterning of mitral and tufted cell collaterals to the olfactory cortex (By similarity). Chemoattractant for fetal olfactory epithelial cells.
Cellular Location	Cell membrane; Peripheral membrane protein. Secreted. Note=Proteolytic cleavage may release it from the cell surface into the extracellular space
Tissue Location	Expressed in the cerebellum (at protein level).

Background

Has a dual branch-promoting and guidance activity, which may play an important role in the patterning of mitral and tufted cell collaterals to the olfactory cortex (By similarity). Chemoattractant for fetal olfactory

epithelial cells.

Images



Western Blot analysis of various cells using KALIG-1 Polyclonal Antibody

Please note: All products are 'FOR RESEARCH USE ONLY. NOT FOR USE IN DIAGNOSTIC OR THERAPEUTIC PROCEDURES'.