

Kanadaptin Polyclonal Antibody

Catalog # AP70632

Product Information

Application	WB, IHC-P, IF, ICC, E
Primary Accession	Q9BWU0
Reactivity	Human, Mouse
Host	Rabbit
Clonality	Polyclonal
Calculated MW	82890

Additional Information

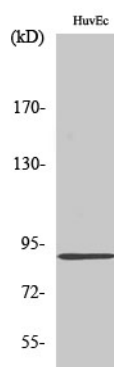
Gene ID	22950
Other Names	SLC4A1AP; HLC3; Kanadaptin; Human lung cancer oncogene 3 protein; HLC-3; Kidney anion exchanger adapter protein; Solute carrier family 4 anion exchanger member 1 adapter protein
Dilution	WB~~Western Blot: 1/500 - 1/2000. Immunohistochemistry: 1/100 - 1/300. Immunofluorescence: 1/200 - 1/1000. ELISA: 1/10000. Not yet tested in other applications. IHC-P~~N/A IF~~1:50~200 ICC~~N/A E~~N/A
Format	Liquid in PBS containing 50% glycerol, 0.5% BSA and 0.09% (W/V) sodium azide.
Storage Conditions	-20°C

Protein Information

Name	SLC4A1AP
Cellular Location	Nucleus. Cytoplasm. Note=Mainly nuclear. Small amounts are found in the cytoplasm
Tissue Location	Ubiquitously expressed.

Images

Western Blot analysis of various cells using Kanadaptin
Polyclonal Antibody diluted at 1 : 2000



Please note: All products are 'FOR RESEARCH USE ONLY. NOT FOR USE IN DIAGNOSTIC OR THERAPEUTIC PROCEDURES'.