

# KCNG2 Polyclonal Antibody

Catalog # AP70637

## Product Information

---

Application	WB, IHC-P
Primary Accession	<a href="#">Q9UJ96</a>
Reactivity	Human, Mouse, Rat
Host	Rabbit
Clonality	Polyclonal
Calculated MW	51240

## Additional Information

---

Gene ID	26251
Other Names	KCNG2; KCNF2; Potassium voltage-gated channel subfamily G member 2; Cardiac potassium channel subunit; Voltage-gated potassium channel subunit Kv6.2
Dilution	WB~~Western Blot: 1/500 - 1/2000. ELISA: 1/5000. Not yet tested in other applications. IHC-P~~N/A
Format	Liquid in PBS containing 50% glycerol, 0.5% BSA and 0.09% (W/V) sodium azide.
Storage Conditions	-20°C

## Protein Information

---

Name	KCNG2 ( <a href="#">HGNC:6249</a> )
Function	Regulatory alpha-subunit of the voltage-gated potassium (Kv) channel which, when coassembled with KCNB1, can modulate the kinetics and conductance-voltage relationship (PubMed: <a href="#">10551266</a> ). Modulates channel activity by shifting the threshold and the half-maximal activation to more negative values (Probable). Potassium channel subunit that does not form functional channels by itself (Probable).
Cellular Location	Cell membrane {ECO:0000250 UniProtKB:Q14721}; Multi-pass membrane protein {ECO:0000250 UniProtKB:P63142}
Tissue Location	Highly expressed in heart, liver, skeletal muscle, kidney and pancreas. Detected at low levels in brain, lung and placenta.

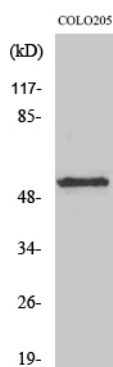
## Background

---

Potassium channel subunit. Modulates channel activity by shifting the threshold and the half-maximal activation to more negative values.

## Images

---



Western Blot analysis of various cells using KCNG2 Polyclonal Antibody

Please note: All products are 'FOR RESEARCH USE ONLY. NOT FOR USE IN DIAGNOSTIC OR THERAPEUTIC PROCEDURES'.