

# KIF4A Polyclonal Antibody

Catalog # AP70655

## Product Information

---

Application	WB
Primary Accession	<a href="#">O95239</a>
Reactivity	Human
Host	Rabbit
Clonality	Polyclonal
Calculated MW	139881

## Additional Information

---

Gene ID	24137
Other Names	KIF4A; KIF4; Chromosome-associated kinesin KIF4A; Chromokinesin-A
Dilution	WB~~Western Blot: 1/500 - 1/2000. ELISA: 1/40000. Not yet tested in other applications.
Format	Liquid in PBS containing 50% glycerol, 0.5% BSA and 0.09% (W/V) sodium azide.
Storage Conditions	-20°C

## Protein Information

---

Name	KIF4A
Synonyms	KIF4
Function	Iron-sulfur (Fe-S) cluster binding motor protein that has a role in chromosome segregation during mitosis (PubMed: <a href="#">29848660</a> ). Translocates PRC1 to the plus ends of interdigitating spindle microtubules during the metaphase to anaphase transition, an essential step for the formation of an organized central spindle midzone and midbody and for successful cytokinesis (PubMed: <a href="#">15297875</a> , PubMed: <a href="#">15625105</a> ). May play a role in mitotic chromosomal positioning and bipolar spindle stabilization (By similarity).
Cellular Location	Nucleus matrix. Cytoplasm. Cytoplasm, cytoskeleton, spindle Midbody Chromosome. Note=Associates with chromosomes at all stage of mitosis (PubMed:11736643, PubMed:15297875, PubMed:15625105) Chromatin localization is dependent on iron-sulfur cluster binding (PubMed:29848660). In anaphase, associates with the mitotic spindle midzone (PubMed:15297875). In telophase and cytokinesis, co-localizes with CIAO2B at the spindle midzone and midbody (PubMed:15297875, PubMed:29848660). Co-localizes with PRC1 in early mitosis and at the spindle midzone from

anaphase B to telophase (PubMed:15297875, PubMed:15625105). Does not localize to the nucleolus (PubMed:11736643)

### Tissue Location

Highly expressed in hematopoietic tissues, fetal liver, spleen, thymus and adult thymus and bone marrow. Lower levels are found in heart, testis, kidney, colon and lung

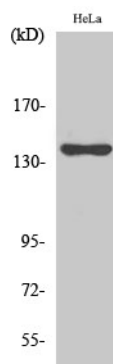
## Background

---

Motor protein that translocates PRC1 to the plus ends of interdigitating spindle microtubules during the metaphase to anaphase transition, an essential step for the formation of an organized central spindle midzone and midbody and for successful cytokinesis. May play a role in mitotic chromosomal positioning and bipolar spindle stabilization.

## Images

---



Western Blot analysis of various cells using KIF4A Polyclonal Antibody diluted at 1 : 500

Please note: All products are 'FOR RESEARCH USE ONLY. NOT FOR USE IN DIAGNOSTIC OR THERAPEUTIC PROCEDURES'.