

KIR6.2 Polyclonal Antibody

Catalog # AP70662

Product Information

Application	WB, IHC-P, IF, ICC, E
Primary Accession	Q14654
Reactivity	Human, Mouse, Rat
Host	Rabbit
Clonality	Polyclonal
Calculated MW	43526

Additional Information

Gene ID	3767
Other Names	KCNJ11; ATP-sensitive inward rectifier potassium channel 11; IKATP; Inward rectifier K(+) channel Kir6.2; Potassium channel; inwardly rectifying subfamily J member 11
Dilution	WB~~Western Blot: 1/500 - 1/2000. Immunohistochemistry: 1/100 - 1/300. Immunofluorescence: 1/200 - 1/1000. ELISA: 1/10000. Not yet tested in other applications. IHC-P~~N/A IF~~1:50~200 ICC~~N/A E~~N/A
Format	Liquid in PBS containing 50% glycerol, 0.5% BSA and 0.09% (W/V) sodium azide.
Storage Conditions	-20°C

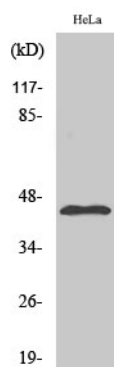
Protein Information

Name	KCNJ11
Function	Inward rectifier potassium channel that forms the pore of ATP-sensitive potassium channels (KATP), regulating potassium permeability as a function of cytoplasmic ATP and ADP concentrations in many different cells (PubMed: 29286281 , PubMed: 34815345). Inward rectifier potassium channels are characterized by a greater tendency to allow potassium to flow into the cell rather than out of it. Their voltage dependence is regulated by the concentration of extracellular potassium; as external potassium is raised, the voltage range of the channel opening shifts to more positive voltages. The inward rectification is mainly due to the blockage of outward current by internal magnesium. Can be blocked by extracellular barium (By similarity). In pancreatic cells, it forms KATP channels with ABCC8/SUR1 (PubMed: 29286281 , PubMed: 34815345). Can form cardiac and smooth muscle-type KATP channels with ABCC9.
Cellular Location	Membrane; Multi-pass membrane protein.

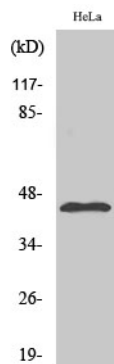
Background

This receptor is controlled by G proteins. Inward rectifier potassium channels are characterized by a greater tendency to allow potassium to flow into the cell rather than out of it. Their voltage dependence is regulated by the concentration of extracellular potassium; as external potassium is raised, the voltage range of the channel opening shifts to more positive voltages. The inward rectification is mainly due to the blockage of outward current by internal magnesium. Can be blocked by extracellular barium (By similarity). Subunit of ATP-sensitive potassium channels (KATP). Can form cardiac and smooth muscle-type KATP channels with ABCC9. KCNJ11 forms the channel pore while ABCC9 is required for activation and regulation.

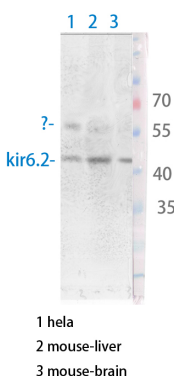
Images



Western Blot analysis of various cells using KIR6.2
Polyclonal Antibody diluted at 1 : 500



Western Blot analysis of NIH-3T3 cells using KIR6.2
Polyclonal Antibody diluted at 1 : 500



Western Blot analysis of various cells using Antibody
diluted at 1:1000. Secondary antibody was diluted at
1:20000

Please note: All products are 'FOR RESEARCH USE ONLY. NOT FOR USE IN DIAGNOSTIC OR THERAPEUTIC PROCEDURES'.