

# KKIALRE Polyclonal Antibody

Catalog # AP70664

## Product Information

---

<b>Application</b>	WB, IHC-P
<b>Primary Accession</b>	<a href="#">Q00532</a>
<b>Reactivity</b>	Human, Rat
<b>Host</b>	Rabbit
<b>Clonality</b>	Polyclonal
<b>Calculated MW</b>	41701

## Additional Information

---

<b>Gene ID</b>	8814
<b>Other Names</b>	CDKL1; Cyclin-dependent kinase-like 1; Protein kinase p42 KKIALRE; Serine/threonine-protein kinase KKIALRE
<b>Dilution</b>	WB~~Western Blot: 1/500 - 1/2000. Immunohistochemistry: 1/100 - 1/300. ELISA: 1/10000. Not yet tested in other applications. IHC-P~~N/A
<b>Format</b>	Liquid in PBS containing 50% glycerol, 0.5% BSA and 0.09% (W/V) sodium azide.
<b>Storage Conditions</b>	-20°C

## Protein Information

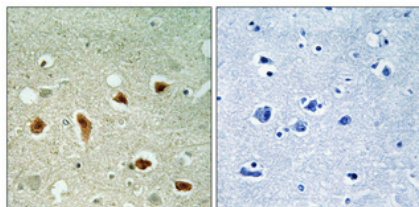
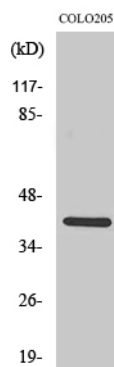
---

<b>Name</b>	CDKL1 ( <a href="#">HGNC:1781</a> )
<b>Cellular Location</b>	Cytoplasm. Nucleus
<b>Tissue Location</b>	Highly expressed in kidney, and to a lower extent in ovary.

## Images

---

Western Blot analysis of various cells using KKIALRE Polyclonal Antibody diluted at 1 : 500



Immunohistochemical analysis of paraffin-embedded Human brain. Antibody was diluted at 1:100(4°,overnight). High-pressure and temperature Tris-EDTA,pH8.0 was used for antigen retrieval. Negative contrl (right) obtaned from antibody was pre-absorbed by immunogen peptide.

Please note: All products are 'FOR RESEARCH USE ONLY. NOT FOR USE IN DIAGNOSTIC OR THERAPEUTIC PROCEDURES'.