

KPI-2 Polyclonal Antibody

Catalog # AP70676

Product Information

Application	WB, IHC-P, IF
Primary Accession	Q8IWU2
Reactivity	Human
Host	Rabbit
Clonality	Polyclonal
Calculated MW	164900

Additional Information

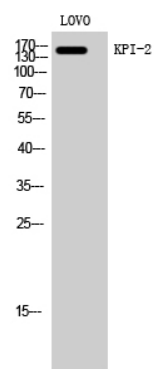
Gene ID	22853
Other Names	LMTK2; AATYK2; BREK; KIAA1079; KPI2; LMR2; Serine/threonine-protein kinase LMTK2; Apoptosis-associated tyrosine kinase 2; Brain-enriched kinase; hBREK; CDK5/p35-regulated kinase; CPRK; Kinase/phosphatase/inhibitor 2; Lemur tyrosine kinase 2
Dilution	WB~~Western Blot: 1/500 - 1/2000. Immunohistochemistry: 1/100 - 1/300. Immunofluorescence: 1/200 - 1/1000. ELISA: 1/20000. Not yet tested in other applications. IHC-P~~N/A IF~~1:50~200
Format	Liquid in PBS containing 50% glycerol, 0.5% BSA and 0.09% (W/V) sodium azide.
Storage Conditions	-20°C

Protein Information

Name	LMTK2
Synonyms	AATYK2, BREK, KIAA1079, KPI2, LMR2
Function	Phosphorylates PPP1C, phosphorylase b and CFTR.
Cellular Location	Membrane; Multi- pass membrane protein
Tissue Location	Mainly expressed in skeletal muscle, and weakly in brain and pancreas.

Background

Phosphorylates PPP1C, phosphorylase b and CFTR.



Western Blot analysis of LOVO cells using KPI-2 Polyclonal Antibody

Please note: All products are 'FOR RESEARCH USE ONLY. NOT FOR USE IN DIAGNOSTIC OR THERAPEUTIC PROCEDURES'.