

KV8.2 Polyclonal Antibody

Catalog # AP70698

Product Information

Application	WB, IHC-P
Primary Accession	Q8TDN2
Reactivity	Human, Mouse
Host	Rabbit
Clonality	Polyclonal
Calculated MW	62459

Additional Information

Gene ID	169522
Other Names	KCNV2; Potassium voltage-gated channel subfamily V member 2; Voltage-gated potassium channel subunit Kv8.2
Dilution	WB~~Western Blot: 1/500 - 1/2000. ELISA: 1/20000. Not yet tested in other applications. IHC-P~~N/A
Format	Liquid in PBS containing 50% glycerol, 0.5% BSA and 0.09% (W/V) sodium azide.
Storage Conditions	-20°C

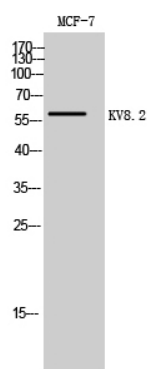
Protein Information

Name	KCNV2
Function	Potassium channel subunit. Modulates channel activity by shifting the threshold and the half-maximal activation to more negative values.
Cellular Location	Cell membrane; Multi-pass membrane protein. Note=Has to be associated with KCNB1 or possibly another partner to get inserted in the plasma membrane. Remains intracellular in the absence of KCNB1
Tissue Location	Detected in lung, liver, kidney, pancreas, spleen, thymus, prostate, testis, ovary and colon

Background

Potassium channel subunit. Modulates channel activity by shifting the threshold and the half-maximal activation to more negative values.

Images



Western Blot analysis of MCF-7 cells using KV8.2 Polyclonal Antibody

Please note: All products are 'FOR RESEARCH USE ONLY. NOT FOR USE IN DIAGNOSTIC OR THERAPEUTIC PROCEDURES'.