

LASS4 Polyclonal Antibody

Catalog # AP70719

Product Information

Application	WB, IHC-P
Primary Accession	Q9HA82
Reactivity	Human
Host	Rabbit
Clonality	Polyclonal
Calculated MW	46399

Additional Information

Gene ID	79603
Other Names	CERS4; LASS4; Ceramide synthase 4; CerS4; LAG1 longevity assurance homolog 4
Dilution	WB~~Western Blot: 1/500 - 1/2000. Immunohistochemistry: 1/100 - 1/300. ELISA: 1/10000. Not yet tested in other applications. IHC-P~~N/A
Format	Liquid in PBS containing 50% glycerol, 0.5% BSA and 0.09% (W/V) sodium azide.
Storage Conditions	-20°C

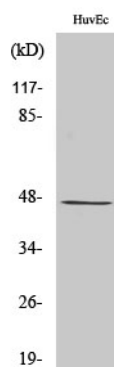
Protein Information

Name	CERS4 {ECO:0000303 PubMed:17977534, ECO:0000312 HGNC:HGNC:23747}
Function	Ceramide synthase that catalyzes formation of ceramide from sphinganine and acyl-CoA substrates, with high selectivity toward long and very-long chains (C18:0-C22:0) as acyl donor.
Cellular Location	Endoplasmic reticulum membrane {ECO:0000250 UniProtKB:Q9D6J1}; Multi-pass membrane protein

Background

May be either a bona fide (dihydro)ceramide synthase or a modulator of its activity. When overexpressed in cells is involved in the production of sphingolipids containing different fatty acid donors (N-linked stearyl- (C18) or arachidoyl- (C20) ceramides) in a fumonisins B1-independent manner (By similarity).

Images



Western Blot analysis of various cells using LASS4 Polyclonal Antibody

Please note: All products are 'FOR RESEARCH USE ONLY. NOT FOR USE IN DIAGNOSTIC OR THERAPEUTIC PROCEDURES'.