

LBP Polyclonal Antibody

Catalog # AP70727

Product Information

Application	WB, E, IHC-P
Primary Accession	P18428
Reactivity	Human, Mouse, Rat
Host	Rabbit
Clonality	Polyclonal
Calculated MW	53384

Additional Information

Gene ID	3929
Other Names	LBP; Lipopolysaccharide-binding protein; LBP
Dilution	WB~~Western Blot: 1/500 - 1/2000. ELISA: 1/40000. Not yet tested in other applications. E~~N/A IHC-P~~Western Blot: 1/500 - 1/2000. ELISA: 1/40000. Not yet tested in other applications.
Format	Liquid in PBS containing 50% glycerol, 0.5% BSA and 0.09% (W/V) sodium azide.
Storage Conditions	-20°C

Protein Information

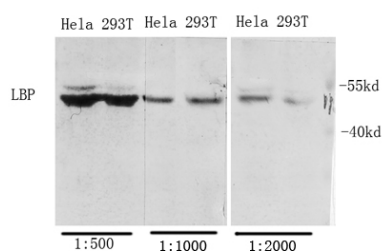
Name	LBP
Function	Plays a role in the innate immune response. Binds to the lipid A moiety of bacterial lipopolysaccharides (LPS), a glycolipid present in the outer membrane of all Gram-negative bacteria (PubMed: 24120359 , PubMed: 7517398). Acts as an affinity enhancer for CD14, facilitating its association with LPS. Promotes the release of cytokines in response to bacterial lipopolysaccharide (PubMed: 24120359 , PubMed: 7517398).
Cellular Location	Secreted. Cytoplasmic granule membrane {ECO:0000250 UniProtKB:P17213}. Note=Membrane- associated in polymorphonuclear Leukocytes (PMN) granules {ECO:0000250 UniProtKB:P17213}
Tissue Location	Detected in blood serum (at protein level).

Background

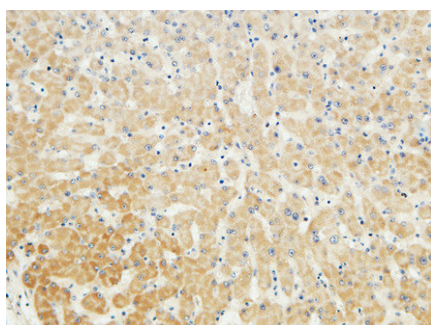
Plays a role in the innate immune response. Binds to the lipid A moiety of bacterial lipopolysaccharides

(LPS), a glycolipid present in the outer membrane of all Gram-negative bacteria (PubMed:[7517398](#), PubMed:[24120359](#)). Acts as an affinity enhancer for CD14, facilitating its association with LPS. Promotes the release of cytokines in response to bacterial lipopolysaccharide (PubMed:[7517398](#), PubMed:[24120359](#)).

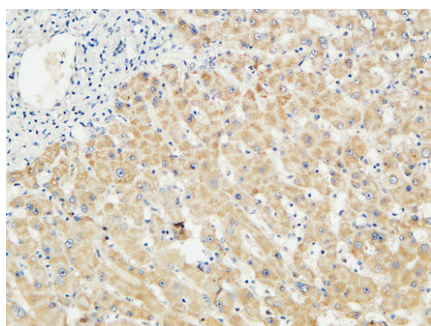
Images



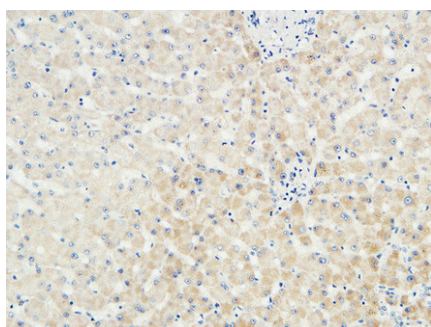
Western Blot analysis of various cells using Antibody diluted at 1:1000. Secondary antibody was diluted at 1:20000 cells nucleus extracted by Minute TM Cytoplasmic and Nuclear Fractionation kit (SC-003, Invent biotech, MN, USA).



Immunohistochemical analysis of paraffin-embedded Human liver. 1, Antibody was diluted at 1:100(4°, overnight). 2, High-pressure and temperature EDTA, pH8.0 was used for antigen retrieval. 3, Secondary antibody was diluted at 1:200(room temperature, 30min).



Immunohistochemical analysis of paraffin-embedded Human liver. 1, Antibody was diluted at 1:100(4°, overnight). 2, High-pressure and temperature EDTA, pH8.0 was used for antigen retrieval. 3, Secondary antibody was diluted at 1:200(room temperature, 30min).



Immunohistochemical analysis of paraffin-embedded Human liver. 1, Antibody was diluted at 1:100(4°, overnight). 2, High-pressure and temperature EDTA, pH8.0 was used for antigen retrieval. 3, Secondary antibody was diluted at 1:200(room temperature, 30min).

Please note: All products are 'FOR RESEARCH USE ONLY. NOT FOR USE IN DIAGNOSTIC OR THERAPEUTIC PROCEDURES'.