

LEKTI Polyclonal Antibody

Catalog # AP70737

Product Information

Application	WB, IHC-P
Primary Accession	Q9NQ38
Reactivity	Human
Host	Rabbit
Clonality	Polyclonal
Calculated MW	120714

Additional Information

Gene ID	11005
Other Names	SPINK5; Serine protease inhibitor Kazal-type 5; Lympho-epithelial Kazal-type-related inhibitor; LEKTI
Dilution	WB~~Western Blot: 1/500 - 1/2000. Immunohistochemistry: 1/100 - 1/300. ELISA: 1/20000. Not yet tested in other applications. IHC-P~~N/A
Format	Liquid in PBS containing 50% glycerol, 0.5% BSA and 0.09% (W/V) sodium azide.
Storage Conditions	-20°C

Protein Information

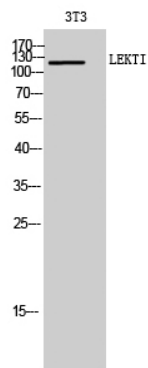
Name	SPINK5
Function	Serine protease inhibitor, probably important for the anti- inflammatory and/or antimicrobial protection of mucous epithelia. Contribute to the integrity and protective barrier function of the skin by regulating the activity of defense-activating and desquamation- involved proteases. Inhibits KLK5, it's major target, in a pH-dependent manner. Inhibits KLK7, KLK14 CASP14, and trypsin.
Cellular Location	Secreted.
Tissue Location	Highly expressed in the thymus and stratum corneum. Also found in the oral mucosa, parathyroid gland, Bartholin's glands, tonsils, and vaginal epithelium. Very low levels are detected in lung, kidney, and prostate.

Background

Serine protease inhibitor, probably important for the anti-inflammatory and/or antimicrobial protection of

mucous epithelia. Contribute to the integrity and protective barrier function of the skin by regulating the activity of defense- activating and desquamation-involved proteases. Inhibits KLK5, it's major target, in a pH-dependent manner. Inhibits KLK7, KLK14 CASP14, and trypsin.

Images



Western Blot analysis of 3T3 cells using LEKTI Polyclonal Antibody

Please note: All products are 'FOR RESEARCH USE ONLY. NOT FOR USE IN DIAGNOSTIC OR THERAPEUTIC PROCEDURES'.