

LHR Polyclonal Antibody

Catalog # AP70741

Product Information

Application	WB, IF
Primary Accession	P22888
Reactivity	Human, Mouse, Rat
Host	Rabbit
Clonality	Polyclonal
Calculated MW	78643

Additional Information

Gene ID	3973
Other Names	LHCGR; LCGR; LGR2; LHRHR; Lutropin-choriogonadotropic hormone receptor; LH/CG-R; Luteinizing hormone receptor; LHR; LSH-R
Dilution	WB~~Western Blot: 1/500 - 1/2000. Immunofluorescence: 1/200 - 1/1000. ELISA: 1/10000. Not yet tested in other applications. IF~~1:50~200
Format	Liquid in PBS containing 50% glycerol, 0.5% BSA and 0.09% (W/V) sodium azide.
Storage Conditions	-20°C

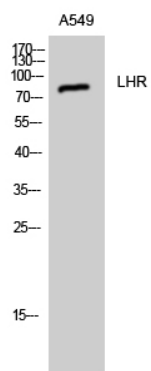
Protein Information

Name	LHCGR
Synonyms	LCGR, LGR2, LHRHR
Function	Receptor for lutropin-choriogonadotropic hormone (PubMed: 11847099). The activity of this receptor is mediated by G proteins which activate adenylate cyclase (PubMed: 11847099).
Cellular Location	Cell membrane; Multi-pass membrane protein
Tissue Location	Gonadal and thyroid cells.

Background

Receptor for lutropin-choriogonadotropic hormone (PubMed: [11847099](#)). The activity of this receptor is mediated by G proteins which activate adenylate cyclase (PubMed:[11847099](#)).

Images



Western Blot analysis of A549 cells using LHR Polyclonal Antibody

Please note: All products are 'FOR RESEARCH USE ONLY. NOT FOR USE IN DIAGNOSTIC OR THERAPEUTIC PROCEDURES'.