

LOK Polyclonal Antibody

Catalog # AP70761

Product Information

Application	WB
Primary Accession	O94804
Reactivity	Human
Host	Rabbit
Clonality	Polyclonal
Calculated MW	112135

Additional Information

Gene ID	6793
Other Names	STK10; LOK; Serine/threonine-protein kinase 10; Lymphocyte-oriented kinase
Dilution	WB~~Western Blot: 1/500 - 1/2000. ELISA: 1/20000. Not yet tested in other applications.
Format	Liquid in PBS containing 50% glycerol, 0.5% BSA and 0.09% (W/V) sodium azide.
Storage Conditions	-20°C

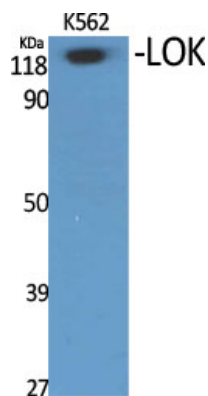
Protein Information

Name	STK10
Synonyms	LOK
Function	Serine/threonine-protein kinase involved in regulation of lymphocyte migration. Phosphorylates MSN, and possibly PLK1. Involved in regulation of lymphocyte migration by mediating phosphorylation of ERM proteins such as MSN. Acts as a negative regulator of MAP3K1/MEKK1. May also act as a cell cycle regulator by acting as a polo kinase kinase: mediates phosphorylation of PLK1 in vitro; however such data require additional evidences in vivo.
Cellular Location	Cell membrane; Peripheral membrane protein
Tissue Location	Highly expressed in rapidly proliferating tissues (spleen, placenta, and peripheral blood leukocytes). Also expressed in brain, heart, skeletal muscle, colon, thymus, kidney, liver, small intestine and lung.

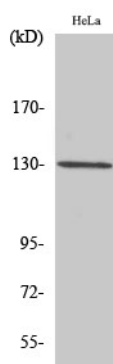
Background

Serine/threonine-protein kinase involved in regulation of lymphocyte migration. Phosphorylates MSN, and possibly PLK1. Involved in regulation of lymphocyte migration by mediating phosphorylation of ERM proteins such as MSN. Acts as a negative regulator of MAP3K1/MEKK1. May also act as a cell cycle regulator by acting as a polo kinase kinase: mediates phosphorylation of PLK1 in vitro; however such data require additional evidences in vivo.

Images



Western Blot analysis of various cells using LOK Polyclonal Antibody



Western Blot analysis of HuvEc cells using LOK Polyclonal Antibody

Please note: All products are 'FOR RESEARCH USE ONLY. NOT FOR USE IN DIAGNOSTIC OR THERAPEUTIC PROCEDURES'.