

# LPD lipase Polyclonal Antibody

Catalog # AP70769

## Product Information

|                   |                        |
|-------------------|------------------------|
| Application       | WB, IHC-P, IF, ICC, E  |
| Primary Accession | <a href="#">Q6XZB0</a> |
| Reactivity        | Human, Rat, Mouse      |
| Host              | Rabbit                 |
| Clonality         | Polyclonal             |
| Calculated MW     | 52922                  |

## Additional Information

|                    |                                                                                                                                                                            |
|--------------------|----------------------------------------------------------------------------------------------------------------------------------------------------------------------------|
| Gene ID            | 149998                                                                                                                                                                     |
| Other Names        | LIPI; LPDL; PRED5; Lipase member I; LIPI; Cancer/testis antigen 17; CT17; LPD lipase; Membrane-associated phosphatidic acid-selective phospholipase A1-beta; mPA-PLA1 beta |
| Dilution           | WB~~Western Blot: 1/500 - 1/2000. Immunohistochemistry: 1/100 - 1/300. ELISA: 1/10000. Not yet tested in other applications. IHC-P~~N/A IF~~1:50~200 ICC~~N/A E~~N/A       |
| Format             | Liquid in PBS containing 50% glycerol, 0.5% BSA and 0.09% (W/V) sodium azide.                                                                                              |
| Storage Conditions | -20°C                                                                                                                                                                      |

## Protein Information

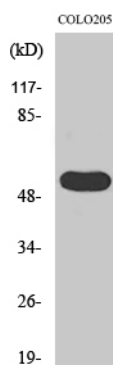
|                   |                                                                                                                                                                                                                                                                                                            |
|-------------------|------------------------------------------------------------------------------------------------------------------------------------------------------------------------------------------------------------------------------------------------------------------------------------------------------------|
| Name              | LIPI                                                                                                                                                                                                                                                                                                       |
| Synonyms          | LPDL                                                                                                                                                                                                                                                                                                       |
| Function          | Hydrolyzes specifically phosphatidic acid (PA) to produce 2- acyl lysophosphatidic acid (LPA; a potent bioactive lipid mediator) and fatty acid. Does not hydrolyze other phospholipids, like phosphatidylserine (PS), phosphatidylcholine (PC) and phosphatidylethanolamine (PE) or triacylglycerol (TG). |
| Cellular Location | [Isoform 1]: Cell membrane. Secreted Note=May associate with lipid draft.                                                                                                                                                                                                                                  |
| Tissue Location   | Expressed in testis. Expressed exclusively at the connecting piece of the sperm.                                                                                                                                                                                                                           |

## Background

Hydrolyzes specifically phosphatidic acid (PA) to produce 2-acyl lysophosphatidic acid (LPA; a potent bioactive lipid mediator) and fatty acid. Does not hydrolyze other phospholipids, like phosphatidylserine (PS), phosphatidylcholine (PC) and phosphatidylethanolamine (PE) or triacylglycerol (TG).

## Images

---



Western Blot analysis of various cells using LPD lipase Polyclonal Antibody

Please note: All products are 'FOR RESEARCH USE ONLY. NOT FOR USE IN DIAGNOSTIC OR THERAPEUTIC PROCEDURES'.