

# LT $\beta$ R Polyclonal Antibody

Catalog # AP70785

## Product Information

---

Application	WB, IF, ICC, E
Primary Accession	<a href="#">P36941</a>
Reactivity	Human, Mouse
Host	Rabbit
Clonality	Polyclonal
Calculated MW	46709

## Additional Information

---

Gene ID	4055
Other Names	LTBR; D12S370; TNFCR; TNFR3; TNFRSF3; Tumor necrosis factor receptor superfamily member 3; Lymphotoxin-beta receptor; Tumor necrosis factor C receptor; Tumor necrosis factor receptor 2-related protein; Tumor necrosis factor receptor type II
Dilution	WB~~Western Blot: 1/500 - 1/2000. Immunofluorescence: 1/200 - 1/1000. ELISA: 1/40000. Not yet tested in other applications. IF~~1:50~200 ICC~~N/A E~~N/A
Format	Liquid in PBS containing 50% glycerol, 0.5% BSA and 0.09% (W/V) sodium azide.
Storage Conditions	-20°C

## Protein Information

---

Name	LTBR
Synonyms	D12S370, TNFCR, TNFR3, TNFRSF3
Function	Receptor for the heterotrimeric lymphotoxin containing LTA and LTB, and for TNFS14/LIGHT (PubMed: <a href="#">24248355</a> ). Activates NF-kappa-B signaling pathway upon stimulation with lymphotoxin (LTA(1)-LTB(2)) (PubMed: <a href="#">24248355</a> ). Promotes apoptosis via TRAF3 and TRAF5. May play a role in the development of lymphoid organs.
Cellular Location	Membrane; Single-pass type I membrane protein.

## Background

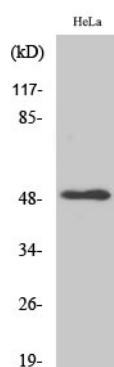
---

Receptor for the heterotrimeric lymphotoxin containing LTA and LTB, and for TNFS14/LIGHT. Promotes

apoptosis via TRAF3 and TRAF5. May play a role in the development of lymphoid organs.

## Images

---



Western Blot analysis of various cells using LTβR Polyclonal Antibody

Please note: All products are 'FOR RESEARCH USE ONLY. NOT FOR USE IN DIAGNOSTIC OR THERAPEUTIC PROCEDURES'.