

# LUC7L2 Polyclonal Antibody

Catalog # AP70786

## Product Information

Application	WB, IHC-P, IF, ICC, E
Primary Accession	<a href="#">Q9Y383</a>
Reactivity	Human, Mouse, Rat
Host	Rabbit
Clonality	Polyclonal
Calculated MW	46514

## Additional Information

Gene ID	51631
Other Names	LUC7L2; CGI-59; CGI-74; Putative RNA-binding protein Luc7-like 2
Dilution	WB~~Western Blot: 1/500 - 1/2000. Immunohistochemistry: 1/100 - 1/300. ELISA: 1/40000. Not yet tested in other applications. IHC-P~~N/A IF~~1:50~200 ICC~~N/A E~~N/A
Format	Liquid in PBS containing 50% glycerol, 0.5% BSA and 0.09% (W/V) sodium azide.
Storage Conditions	-20°C

## Protein Information

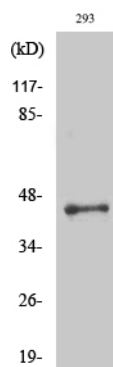
Name	LUC7L2
Function	May bind to RNA via its Arg/Ser-rich domain.
Cellular Location	Nucleus speckle {ECO:0000250 UniProtKB:Q7TNC4}. Nucleus, nucleoplasm {ECO:0000250 UniProtKB:Q7TNC4}. Note=Colocalizes with SCNM1 and SNRNP70 in nuclear speckles {ECO:0000250 UniProtKB:Q7TNC4}

## Background

May bind to RNA via its Arg/Ser-rich domain.

## Images

Western Blot analysis of various cells using LUC7L2 Polyclonal Antibody



Please note: All products are 'FOR RESEARCH USE ONLY. NOT FOR USE IN DIAGNOSTIC OR THERAPEUTIC PROCEDURES'.